

Introduction

Thank you for your purchasing our Learning Digital LCD Universal Remote Control. You have selected a newly designed remote control with latest concept and fastest way to set up directly by the brand name and code No.

This universal remote control almost works with all brands of Televisions (TV), DVD-players and DVR-players (DVD), DVB receivers and (digital) Satellite receivers and Cable box (DVB), Video Recorders (VCR), Tuner receivers (TUNER), Tape receivers (TAPE), CD-players (CD), Audio amplifiers and LD-players and other Audio (AUX).

You can use Auto Search to scan the code library in case that you can not find your device brand in the code list.

This Remote control also can learn a new code from an original remote control to supplement the codes in case of its shortage.

Show View function scans all channels to let you have quick view.

All off function can switch on or off all your devices with one button.

Macro function makes several sequent operations with one button for your home theater.

Volume lock can fix VOL+/VOL- button to control Amplifier only for your home theater.

Device lock can fix the device against changing by a new set up until you unlock it.

Backlight for LCD screen and **separate device backlight** to show you the currently working device.

Low battery indication to remind you when need to replace batteries.

All the set up data will be stored in **back up memory** permanently, you don't need to worry about data loss when you replace battery.

Real time clock to show you time, AM or PM.

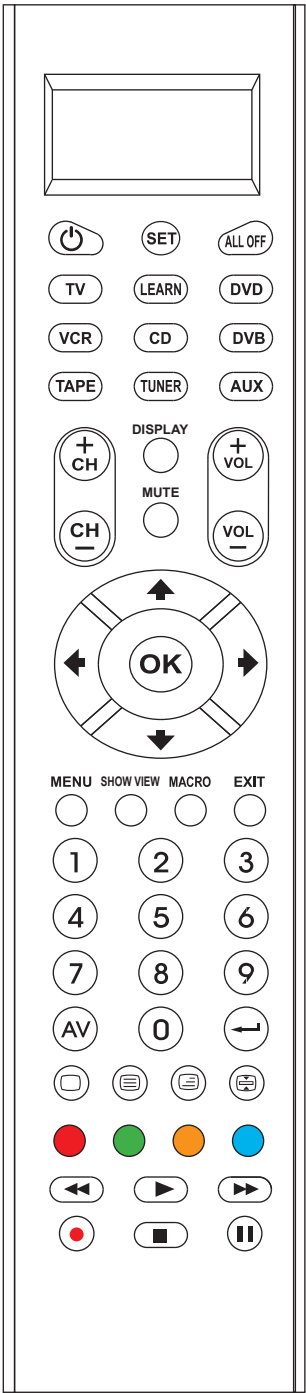
Please enjoy the time with this new intelligent LCD Universal Remote Control.

Device Code Assignment

Bank	for Device	Initial code	Total of codes
TV	TV	048	488
VCR	VCR	075	182
DVB	Satellite Cable DVB	075	403
DVD	DVD DVR	026	190
CD	CD	035	124
TUNER	TUNER	039	114
TAPE	TAPE	067	134
AUX	AMP LD VCD	032	204

Total codes: 1839

Key Functions



SET

Starting to set up the remote control or show you the status of LCD screen.

LEARN

Setting up learning functions.

TV VCR DVB CD DVD TUNER TAPE AUX

Selecting the device which you want to control.

POWER

Turning the device on or off.

AV

Works like the **TV/Video** key on your original TV remote, and **TV/SAT key** on your original satellite remote, **A.B** in cable and CD modes.

MENU

Works like the Menu or OSD (on-screen display) or Memory key on your original remote control.

CH ±

Works like the Channel Up and Down on your original remote control.

VOL ±

Control the volume like the Volume Up and Down on your original remote control.

◀◀ REW

Fast reverse.

▶▶ PLAY

Turn on your DVD, CD etc.

▶▶ FFWD

Fast forward

● REC

Record

Key Functions

■ STOP

Terminate your operation.

|| PAUSE

Terminate the operation for a moment and standby.

SHOW VIEW

Scans all channels for you to quick view all programs.

All off

Switches on or off all your devices only with one button.

Macro

Let you make sequent operations of your home theater.

Display

Displaying info on the selected channel.



Key to mute the sound.


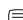

0-9

The number keys operate the same function as on your original remote control, and maybe also used for entering device codes when setting up.

← Works like the enter on your original remote.

▲ ▼ ◀ ▶ OK EXIT

Works like the **UP, DOWN, LEFT, RIGHT, OK, EXIT** Keys on your original remote control as menu function. But during set up mode, they are only used as cursor, confirm and exit from programming your remote control.

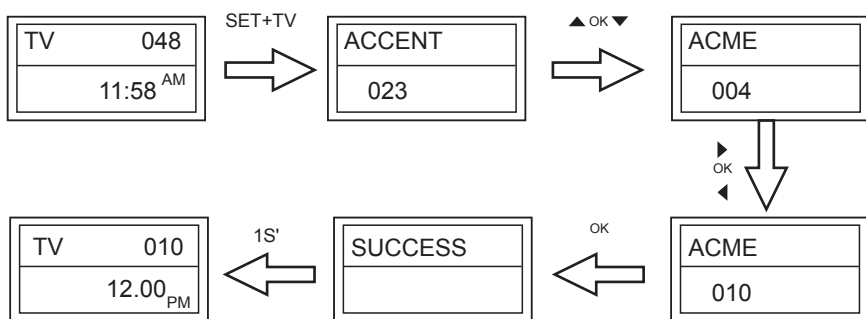
- ☐ Television video
-  TV and text mixed
-  Teletext mode
-  Page hold ☐

RED YELLOW BLUE GREEN buttons are for TV Fast Text.

Device Set- Up

Direct Set - Up by Brand and Code

1. Turn on the device (e.g. **TV**) you would like to operate. If it is a VCR, Please insert a tape.
2. Press and hold **SET** key on your remote control. Then press (simultaneously) one of the device keys (e.g. **TV**)
3. Then release them, the Brand will be displayed on the screen.
4. You can press the **▲** or **▼** key to select the brand of your device (e.g. Your TV brand: **Life**)
5. Check the function of the keys. If none of the keys of your new remote control can work, or most of the keys work improperly, please try another code by **◀** or **▶** key, until all basic functions operate properly.
6. If you are satisfied with the code, just press **OK** key to save it. LCD shows **SUCCESS** and then finishes the set up.



Remark:

1. To return to beginning status, press the **EXIT** key or the device key (e.g. **TV**, or **VCR**...)
2. You must point your remote control to the device that you want to control when you test the keys.
3. **▲▼◀▶OK, EXIT** is only used to set-up your new remote control during set up process. You can't control your device as normal menu function at this moment until you quit from setting up.
4. If the device is locked, you must first unlock the device to set up.

Set-up by Auto Search

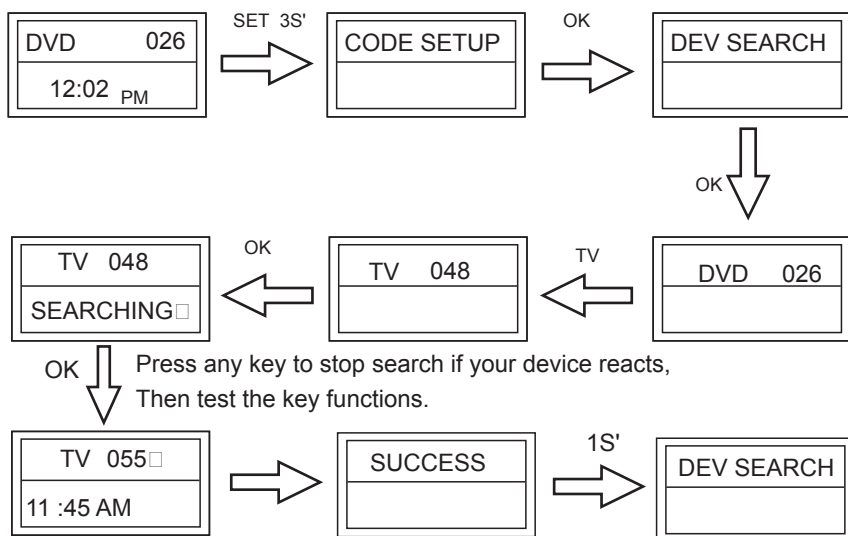
If set-up by **brand and the code** failed or you cannot find the brand name of your own device in remote control screen, you may use the Auto Search to find the correct code to operate your device.

1. Turn on the device (e.g. TV) you would like to operate. If it is a VCR, Please insert a tape.
2. Press **SET** key on your new remote control for more than 3 seconds, then release it.
3. Press the **▲** or **▼** keys to select **CODE SETUP** in the LCD menu, and press **OK** key.
4. The screen shows the **DEV SEARCH** in the LCD menu, and press **OK** key, then press device key to select your desired operation device(e.g. TV) and then

Device Set- Up

press OK key to start **Auto Search**. (You must point your remote control to your device at the moment)

5. See if the device reacts or not, once the device reacts, press any key to stop the search.
6. Test if most of the keys work well or not. If most keys work not good enough, please repeat step 4~5.
7. If you find satisfied code please press **OK** key to save it and LCD shows **SUCCESS** and then show **DEV SEARCH**. You can press device key (e.g. **DVD**) again to finish SET UP or use **▲** or **▼** to select other set up.



Remark:

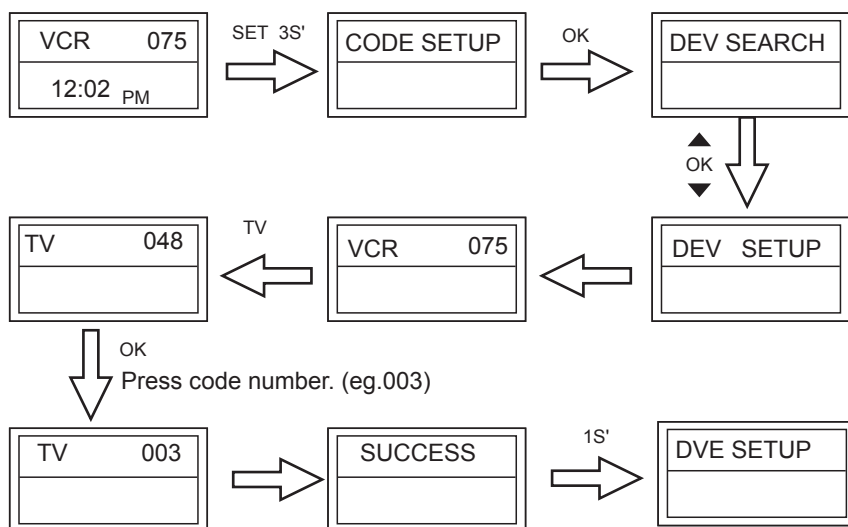
1. If you do not stop the search in time when the device reacts, you may press the **▲** or **▼** key to search back to find the passed code.
2. **▲ ▼ OK, EXIT** is only used to set-up your new remote control during the Auto Search, you can't control your device for menu function at the moment until you quit from the set up.
3. When remote control searches through all codes, the remote control will stop at the beginning code of the search.
4. If the device is locked, you must first unlock the device then set up.

Set-up by Entering Code

1. Turn on the device, which you would like to control (e.g. TV).
2. In the back section of this manual, find the brand name and code No. of your device brand (e.g. **Lifetec 003,010,062,**).
3. Press **SET** key on your new remote control for more than 3 seconds, then release it.
4. Press the **▲** or **▼** keys to select **CODE SETUP** in the LCD menu, and press OK key.
5. The screen shows **DEV SEARCH** in the LCD menu, press the **▲** or **▼** keys to select **DEV SETUP** in the LCD menu, and press **OK** key.

Device Set- Up

- Then you press device key to select your desired operation device(e.g. TV) and then press **OK** key, you must now enter the **3-digit device code** (e.g. 003 for Lifetec TV)
- Press **OK** key to save it and LCD shows **SUCCESS**, and press **EXIT** key two times to exit from the SETUP mode.
- You check the function of the keys on remote control. If most keys on your new remote control do not work properly, try another 3-digit device code (e.g. 010...) from the list under the same brand. Repeat steps 3 to 7 until all the basic functions operate correctly.



Learning

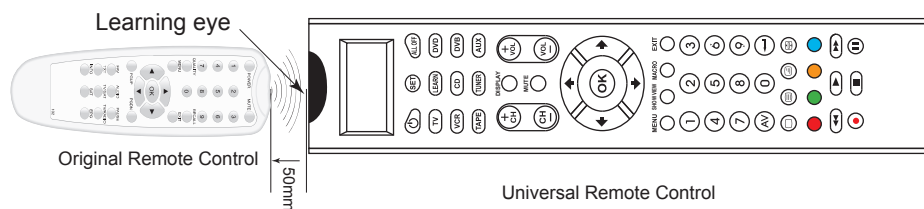
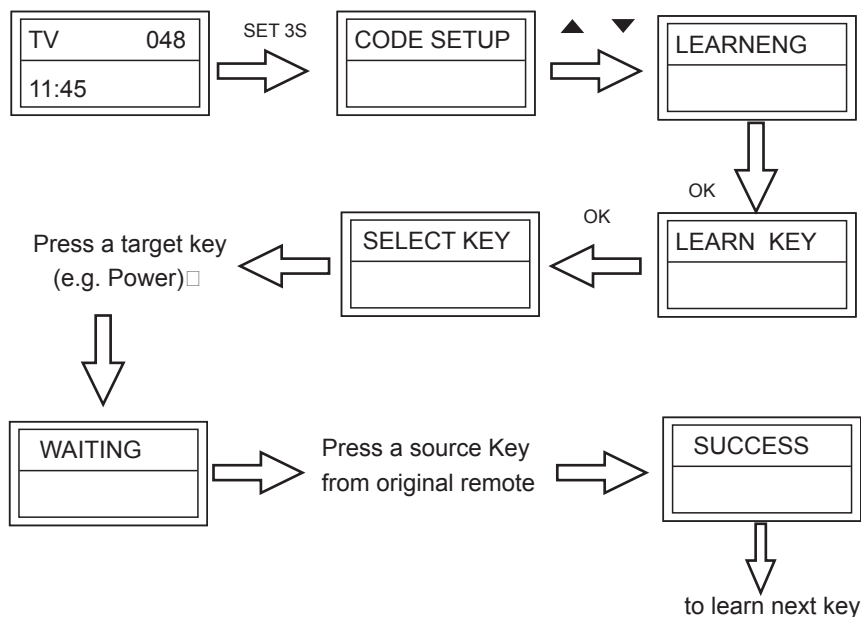
The **LEARN** feature is used to supplement the preprogrammed code list. The standard code list may provide most of the functions needed, but you can add a small number of additional functions for your remote control, or you can add a new code from a new remote control which is not in the code list. Under learning mode, you must need to prepare another remote control that you will take the codes into this remote control. You can select **LEARN KEY** to learn commands, or **DELETE KEY** to delete learn commands, or choose **DELETE DEV** to delete all commands under a device, or **DELETE ALL** for all learnt commands under all device in learning category.

Learn a Command

- Press a device key (e.g. **TV**) where you want to learn .
- Press and hold the **SET** key for more than 3 seconds, then release it. Or you can press **Learn** key for more than 3 Seconds then you can enter into learning mode directly.
- Scroll **▲** or **▼** key to **LEARNING** in the LCD menu, then press the **OK** key.

Learning

4. Scroll ▲ or ▼ key to **LEARN KEY** in the LCD menu and then press **OK** key.
The LCD displays **SELECT KEY**.
5. Select the (target) key you want to learn (e.g. Power) on new remote control.
Then LCD shows "**WAITING**".
6. Point the transmitter of the original remote control remotes face to the receiver window of this universal remote by approximately 30mm apart.
7. Press and hold the original remote key (e.g. Power) until the LCD display **SUCCESS** for 1 second. If LCD display **FAILED**, please Repeat Steps 4-6.
8. Repeat Step 4-6 to learn more other keys.



Remark:

1. A selected target key can be multi learnt from different source keys, it will store the final learnt signal only.
2. All usual function keys can be learnt except Show View, Macro, Set, Learn, All off .
3. Some code form may not be learnt by this remote control
4. You can learn about 100 keys total for 8 devices.

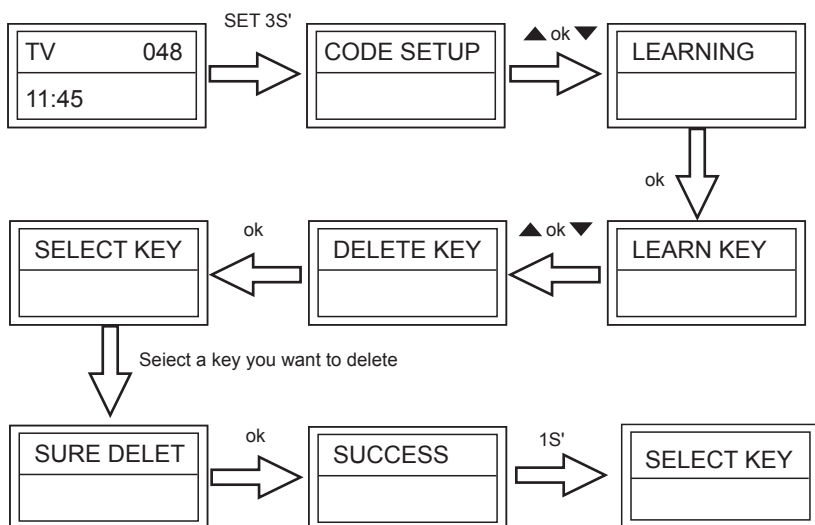
Delete the Learnt Key

If you like to delete a learnt command, you can follow the steps as below:

1. Press the device key (e.g. **TV**) where the command you like to delete.
2. Press and hold the **SET** key for more than 3 seconds, then release it.
3. Scroll ▲ or ▼ key to **LEARNING** in the LCD menu, then press OK key and the LCD display **LEARN KEY**.

Learning

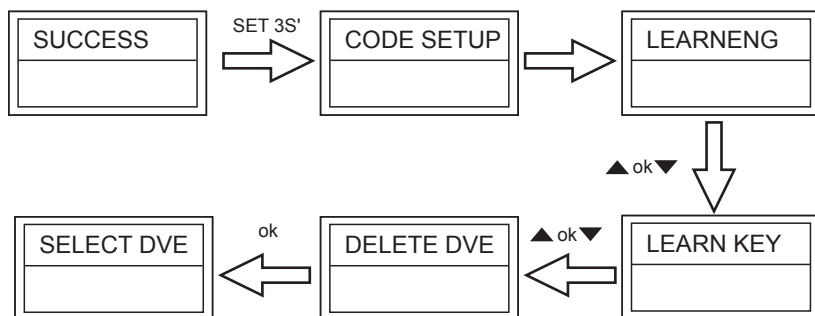
4. Scroll ▲ or ▼ key to **DELETE KEY** in the LCD menu and then press OK key.
5. Press the key that you want to delete, the LCD shows **SURE DELET** and then press the **OK** key to confirm, the LCD will show **SUCCESS**.
6. Repeat Step 4 to delete other keys you want.
7. Press a device key (e.g. TV) to quit the delete operation when all desired remote commands are deleted.



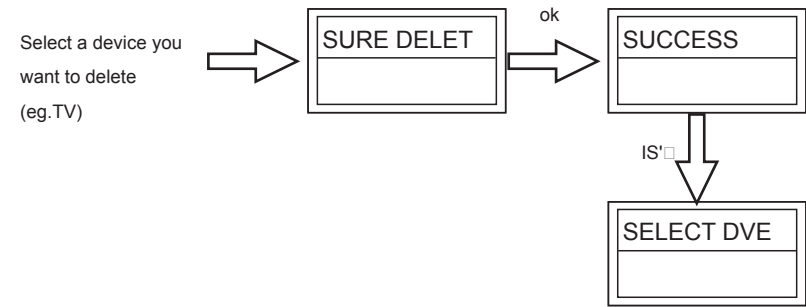
Delete All Learnt Command of a Device

If you like to delete all learnt commands in a device once, instead of deleting every key one by one, please follow below steps:

1. Press a device key (e.g. **TV**) where you want to delete commands.
2. Press and hold the **SET** key for more than 3 seconds, then release it.
3. Scroll ▲ or ▼ key to **LEARNING** in the LCD menu, and then press the **OK** key and the LCD display **LEARN KEY**.
4. Scroll ▲ or ▼ key to **DELETE DEV** in the LCD menu and then press the OK key.
5. Select device you want to delete, then press **OK** key.
6. The LCD shows **SURE DELET** and then press **OK** key, the LCD shows **SUCCESS**.
7. Repeat step 5 to delete commands in other devices.
8. Press **EXIT** key (e.g. **TV**) to quit from deleting operation.



Learning

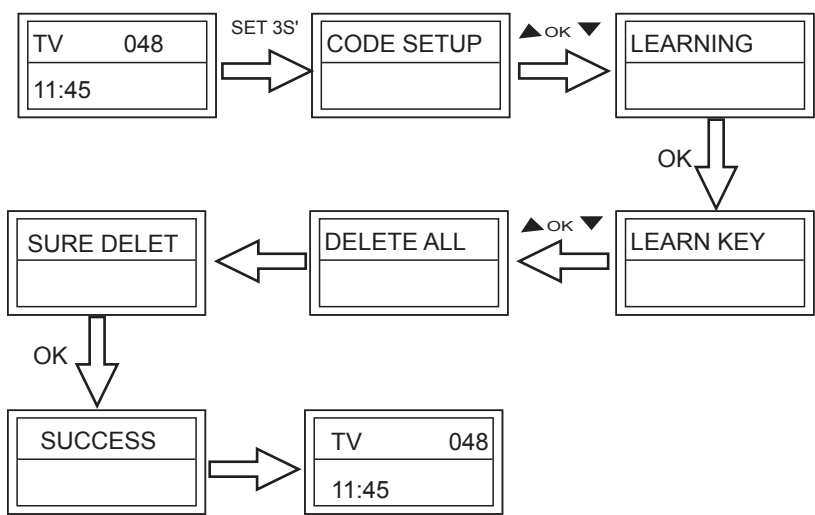


Remark: It will take about 3 minutes for delete all commands in one device. If the commands are not so many, we suggest you delete commands one by one.

Delete All Learnt Keys

If you like to delete all learnt commands in the unit, please follow the below steps:

1. Press and hold the **SET** key for more than 3 seconds, then release it.
2. Scroll **▲** or **▼** key to **LEARNING** in the LCD menu, then press OK key, LCD shows **LEARN KEY**.
3. Scroll **▲** or **▼** key to **DELETE ALL** in the LCD menu and then press OK key.
4. The LCD shows **SURE DELET**, then press **OK**,LCD shows **SUCCESS** to finish the deletion.



Macro Function

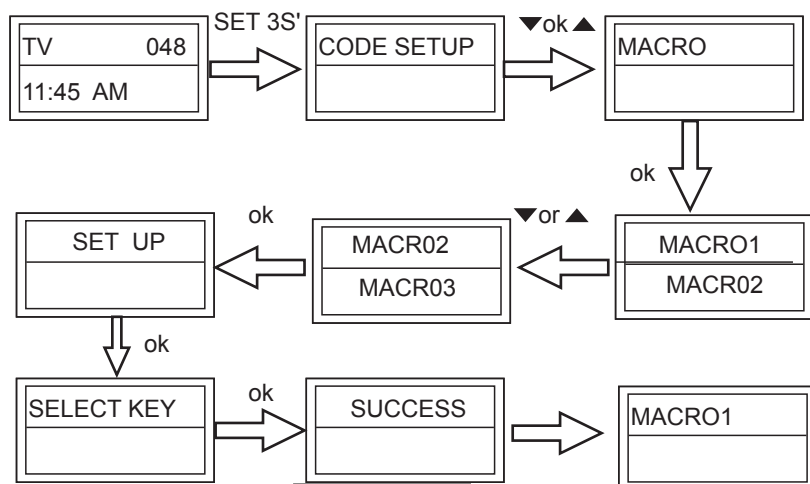
Macro Function

Set up Macro

Macro function let you make sequent operation for your home theater.

You can set up a Macro by following below steps:

1. Press and hold **SET** key for more than 3 seconds, then release it.
2. Press the ▼ or ▲ key to select **MACRO** in the LCD menu, and then press OK key.
3. Press the ▼ or ▲ key to select the **MACRO1** in the LCD menu (or **Macro2** or **Macro3**), then press OK key.
4. The screen shows **SETUP**, and then press OK key.
5. You can select the device and function key for a sequent operation that you like.
(e.g.: **TV+POWER+MUTE+AV**, **DVD+PLAY**, **VCR+RECORD**, etc. That means you want turn on the TV and shut off its sound, switch TV input to AV port, at the same time DVD start to play disc, VCR begins to record)
6. Press **OK** key to save the setting, LCD shows **SUCCESS** then exit to current setup state,
7. You can press any device key to finish set up or press the **EXIT** key to last state and use ▼ or ▲ to select other set up.



Select the device and function key that you like
(eg. TV+POWER+AV,DVD+POWER)

Remark:

1. You can set up to maximum 10 commands in a MACRO.
2. Make sure all the keys can send out signals, otherwise even if you programmed these keys inside the MACRO, it still can not work properly when you operate MACRO function. You can check those keys by pressing them to see the relative **Device** buttons flash or not before you set up MACRO.
3. Make sure the device must have relative conditions when you operate MACRO function. For example the disc must be put in DVD player and a video tape must be put in VCR when you like to play DVD or make a record by your VCR.

Macro Function

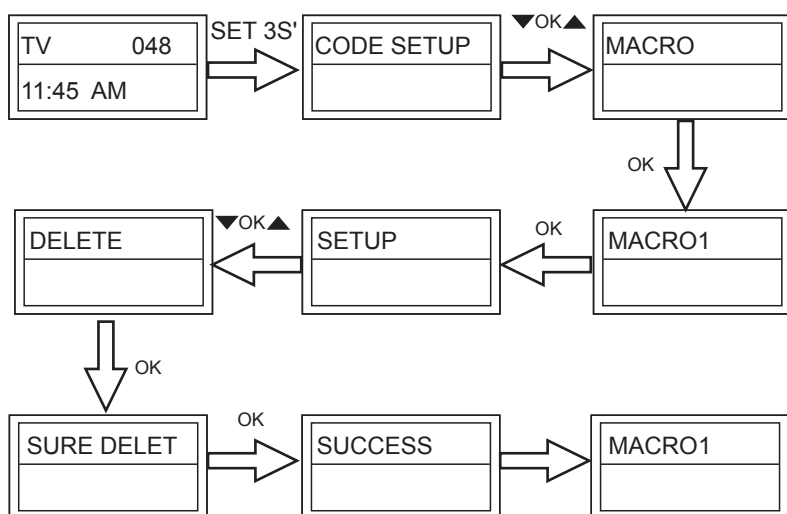
Operate Macro

Press and hold **MACRO** key and 1Key (or 2,3 Key), and then release them.

The remote control will send out a sequent IR commands that you programmed before.

Delete Macro

1. Press and hold the **SET** key for more than 3 seconds, then release it.
2. Press the ▼ or ▲ key to select the **MACRO** in the LCD menu, and then press the **OK** key.
3. Press the ▼ or ▲ key to select the **MACRO2** in the LCD menu, then press the **OK** key LCD shows **SET UP**.
4. Press the ▼ or ▲ key to select the **DELETE** in the LCD menu, then press the **OK** key.
5. LCD shows **SURE DELETE**, Press the **OK** key to confirm the delete and LCD display **SUCCESS** then back to last state.
6. You can press any device key to finish the delete operation or press the **EXIT** key to last state and use ▼ or ▲ to select other set up.



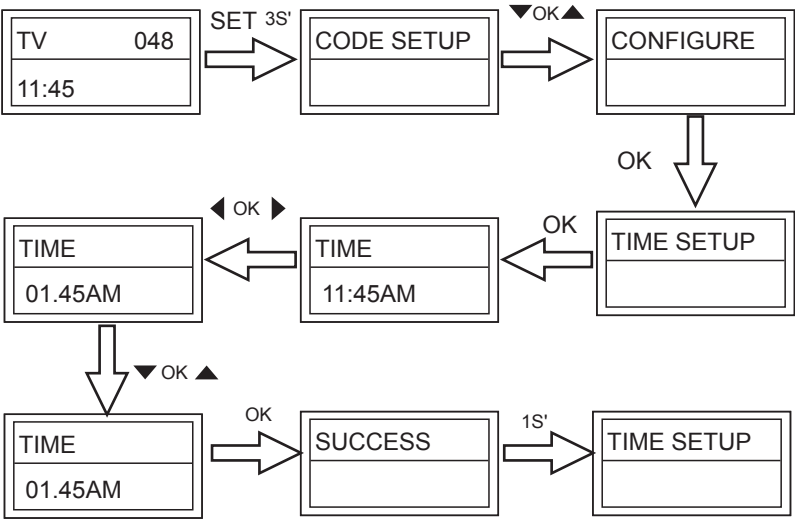
Other Set Up

A. Set up Clock

You can set up the clock in your LCD remote control and the clock will be displayed on the screen.

1. Press and hold **SET** key for more than 3 seconds, then release it.
2. Press the ▼ or ▲ key to select **CONFIGURE** in the LCD menu, and then press **OK** key.
3. Press the ▼ or ▲ key to select **TIME SETUP** in the LCD menu, and then press **OK** key.
4. Press the ◀ or ▶ key to move the cursor to select hour or minute or **AM/PM**, then press the number key to set correct time, and press the ◀ or ▶ key to select **AM** or **PM**.
5. Press the **OK** key to save the setting and LCD display **SUCCESS** for 1 second then exit to current setup state, if you enter errors the LCD screen shows **ERROR** for 1 second. You can press any **device** key to finish set up or press **EXIT** key return to the last state.

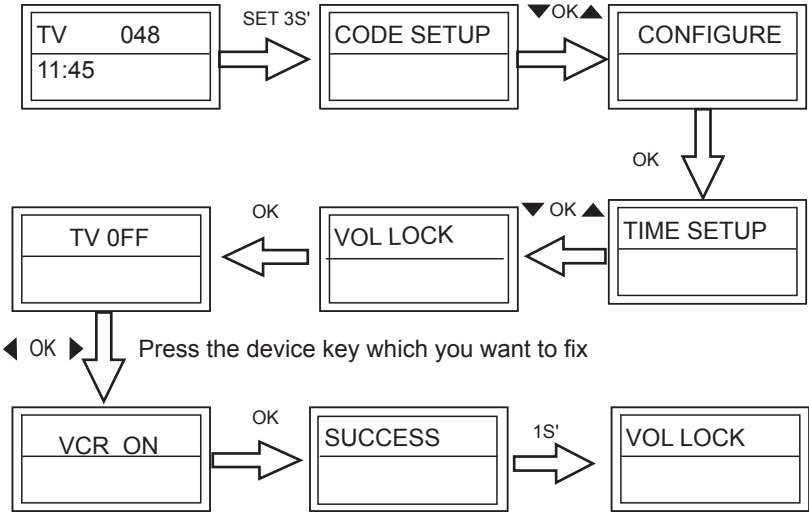
Other Set-up



B. Volume Lock

This function makes you very convenient when you only use one device to adjust volume. For example, you may use your **amplifier** as your main volume control, then you can use this function to fix the volume and mute key of **AUX**, no matter which device you will use (even you will use TV, DVD, VCR etc), the volume and mute key on remote control still control the volume and mute of your amplifier.

1. Press and hold the **SET** key for more than 3 seconds, then release it.
2. Press the **▼** or **▲** key to select **CONFIGURE** in the LCD menu, then press OK key.
3. Press the **▼** or **▲** key to select **VOL LOCK** in the LCD menu, then press **OK** key.
4. Press the device key to select the device you want to fix, such as **AUX**.
5. Press the **◀** or **▶** key to change to the **ON** or **OFF** mode.
6. Press the **OK** key to save the setting and LCD display **SUCCESS** then to current setup state, You can press any device key to finish set up or press the **EXIT** key to last state, or you can use **▼** or **▲** to select other set up.



Other Set-up

Remark:

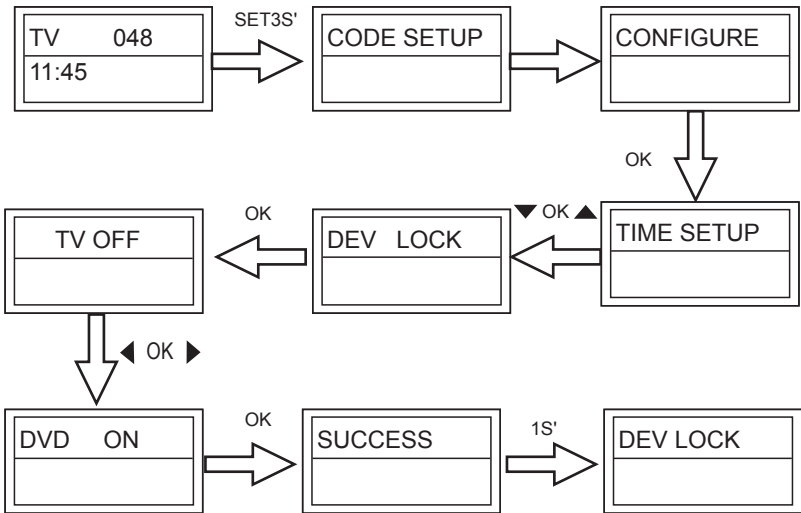
You can only lock one device for volume and mute of your new remote control. Then locked device will be unlocked when you lock on the other device automatically.

C. Device Lock

You can use Device lock function to fix current device code and this device code cannot be changed by brand

and code set up or auto search. You can set it to the "OFF" to quit from this function.

1. Press and hold the SET key for more than 3 seconds, then release it.
2. Press the ▼ or ▲ key to select the CONFIGURE in the LCD menu, then press the OK key.
3. Press the ▼ or ▲ key to select the DEV LOCK in the LCD menu, then press the OK key.
4. Press the device key to select the device that you want to fix, such as TV (or DVD, or VCR)
5. Press the ◀ or ▶ key to change to the ON or OFF mode.
6. Press OK key to save the setting and LCD display SUCCESS then exit to current setup state. You can press any device key to finish set up or press the EXIT key to last state or you can use ▼ or ▲ to select other set up.



Remark:

You can fix all device codes and these device codes cannot be changed by neither Auto Search nor Brand Code Set up.

D. Background Light

If the **background light** is on, the background light will be on when you press any key.

1. Press and hold the SET key for more than 3 seconds, then release it.

Other Set-up

2. Press the ▼ or ▲ key to select the **CONFIGURE** in the LCD menu, and then press the OK key.
3. Press the ▼ or ▲ key to select the **LIGHT** in the LCD menu, then press the **OK** key.
4. Press the ◀ or ▶ key to change to the **ON** or **OFF** mode.
5. Press the OK key to save setting and LCD shows **SUCCESS** then exit to current setup state, You can press any device key to finish set up or press the **EXIT** key to last state, or you can use ▼ or ▲ to select other set up.

E. Contrast Adjust

If you are not satisfied the screen contrast of your remote control, you can use below steps to change it.

1. Press and hold the **SET** key for more than 3 seconds, then release it.
2. Press the ▲ or ▼ key to select the **CONFIGURE** in the LCD menu, then press the **OK** key.
3. Press the ▼ or ▲ key to select the **CONTRAST** in the LCD menu, then press the **OK** key.
4. Press the ◀ or ▶ key to adjust contrast level, and then press the **OK** key when you satisfied.
5. Press the OK key to save the setting and the LCD shows **SUCCESS** then exit to current setup state. You can press any device key to finish set up or press the **EXIT** key to last state, or you can use ▲ or ▼ to select other set up.

F. Show View Function

SY004 has a **Show view** function to scan all TV or CAB/SAT channels for your quick view.

1. Press the device key to select the device (such as TV) that you want to operate.
2. Press and hold the Show View key about 1 second. When the device's LED flashes and it goes into Show View mode. The remote control automatically scans all channels for a brief quick view.

Remark: 1. The remote control must be pointed at the device until Show View mode finished.

2. If you want to exit the show view mode, please press any key.

G. ALL OFF

You can turn on or off all devices by this button.

Press and hold the **ALL OFF** key about 1 second and then release them. The remote control will send out all current power signal to turn on(or turn off) for every device one by one. Meanwhile the device key flashes to tell you which power signal is been sending.

Other Set-up

Remark: The remote control must be pointed to device that you like to control until the operation finished.

H. Clear All

Erase all the setting up data, and go back to the factory default settings.

1. Press and hold the **SET** key for more than 3 seconds, then release it.
2. Press the ▼ or ▲ key to select the **CONFIGURE** in the LCD menu, then press the **OK** key.
3. Press the ▼ or ▲ key to select the **CLEAR ALL** in the LCD menu, then press the **OK** key and LCD shows **SURE CLEAR**.
4. Then press the **OK** key to clear all settings and go back to original default settings.