



SECURITY AND CCTV

PRODUCT RANGE 2017



AHD & IP Cameras



DVRs, NVRs & CCTV Kits



Testers, Accessories & More

VISIT DOSS.COM.AU OR CALL 1800 337 366 FOR INFORMATION



Be in the know!

Watch informative videos and get the low down on Doss Security products. Visit goo.gl/gKXa2W

DOSS SECURITY AND CCTV CONTENTS

2017
Edition



IP CCTV

Our full range of Dome and Bullet IP Cameras, NVRs, and other IP related accessories.

Pg. 3



AHD CCTV

AHD provides Full HD images over your existing Analog CCTV infrastructure.

Pg. 7



CCTV Kits

All in one CCTV packages that focus on product compatibility and ease of use. A complete and convenient CCTV system solution.

Pg. 9



Analog CCTV Cameras

Select quality controlled analog cameras with the manufacturing process fully explained.

Pg. 10



Analog CCTV Accessories

We stock a wide range of products and accessories to connect, enhance & expand your analog CCTV system.

Pg. 11



CCTV Testers

CCTV Testers for every format, and other accessories for your CCTV installation.

Pg. 13



Power & Cables

Power and the cables that connect your system are vital. Check out our coaxial cables, power supplies, plugs, sockets and more.

Pg. 16



Warning Devices & Intercoms

A full range of warning signage, detection devices, video intercoms for domestic applications and more!

Pg. 18

Analytics & NVRs

The Age of Analytics

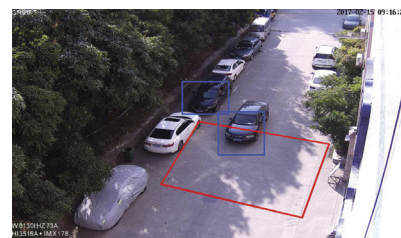
With more and more people now turning to CCTV surveillance for their security needs, its no surprise that new technologies are being developed and implemented to help reduce the need for manual monitoring and the costs associated. One such strategy is the use of Intelligent Video Analytics (IVA).

The Magic of Intelligent Detection

IVA focuses on automating the video analysis of large amounts of data footage and security alerts, rather than having people monitor each camera manually. The software utilises a range of rules and algorithms to ignore any changes in lighting conditions or non-critical activity, and focus on specific triggers to identify suspicious behaviour and objects.

A good example of Analytics would be its ability to alert authorities of suspicious objects left in public places, like airports, and use facial recognition to help track down fugitives. It could also be used in Highway CCTV situations to capture and report a vehicle travelling in the wrong direction or performing an illegal turn. Even for the domestic home, Analytics could alert and monitor a trespasser crossing a property line.

With every aspect of our lives being digitised, video footage will be increasingly tagged to these events. Imagine a person scanning a train ticket at a turn style. The scanning of the ticket and the footage from the CCTV camera will get put together and be readily accessible in real time or a month later.



Line cross event trigger



Movement & tracking.
Target counting.



Objects/area detection



DETECTION MODE



TARGET COUNT



OBJECT LOST



AREA DETECTION



LINE CROSSING

IQ Network Video Recorders

Doss are proud to introduce a new range of intelligent NVRs. Each performing all the regular functions of your average network video recorder but with the added bonus of utilising IVA features.

Latest P2P technology allows viewing from anywhere in the world without configuring complicated Port Forwarding or expensive Dynamic DNS services! Simple QR Codes allow instant access from mobile phones using the free app available for iOS and Android.

- ▶ Full real time network video access to all channels
- ▶ H.264 dual-stream decoding, embedded Linux OS
- ▶ Supports simultaneous video playback & remote monitor
- ▶ VGA/HDMI synchronised output
- ▶ Up to 5MP output resolution
- ▶ 12x digital zoom in preview and playback modes
- ▶ Supports ONVIF, RTSP, GB28181 industry standard protocol
- ▶ Supports DDNS, EMAIL, UPNP, NTP, P2P
- ▶ Remote viewing via web-browser, smartphone app (iOS + Android) and PC Client

Online Video Library

See how all these amazing features work and more by checking out our range of informative videos online at goo.gl/XG7yCs



NEW

NEW IQ FEATURES



5MP RESOLUTION



NEW GUI (GRAPHIC USER INTERFACE)



8CH 4POE

43172007 | NVR8IQECO

8CH NVR WITH 4 POE IQ ANALYSIS
2 HDD

- ▶ Record up to 8 cameras/channels of footage
- ▶ Connect up to 4 IP cameras directly or 8 cameras with additional power supply



8CH 8POE

43172010 | NVR8IQ

8CH NVR WITH 8 POE IQ ANALYSIS
2 HDD

- ▶ Record up to 8 cameras/channels of footage
- ▶ Connect up to 8 IP cameras directly with PoE



16CH 8POE

43172026 | NVR16IQ

16CH NVR WITH 8 POE IQ ANALYSIS
2 HDD

- ▶ Record up to 16 cameras/channels of footage
- ▶ Connect up to 8 IP cameras directly or 16 cameras with additional power supply
- ▶ Additional Audio In & Out

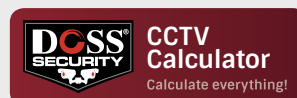
NVRs & IP Cameras

Network Video Recorders

Configure, view and record multiple IP cameras at once! The Doss NVRs are able to provide you with a familiar DVR experience over IP. Connect your cameras directly to the PoE enabled NVRs to power them or, if they are remotely powered, connect your NVR to your existing network.

NVR/DVR Storage Calculator

Determine what storage size you require or how many days you can fit by using the Doss Security CCTV Calculator at goo.gl/C2K4or

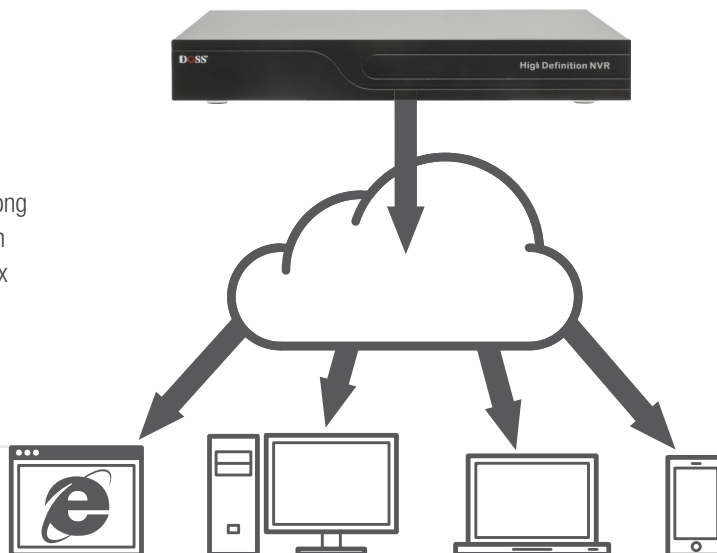


P2P is so easy.

P2P (peer-to-peer) streaming-forwarding services enable IP devices to be accessible anywhere in the world with virtually plug-and-play configuration, simplifying the installation process.

Doss' DVRs, NVRs and some IP Cameras are P2P compatible, as long as they can access the internet (via wired cable or Wi-Fi), users can access the devices from anywhere in the world without any complex network configuration such as Port Forwarding or Dynamic DNS – if these concepts scare you, then great! P2P compatible products are perfect for you.

NO NEED FOR: PORT FORWARDING
NAT CONFIGURATION
DDNS SERVICES



IP Cameras



DOME STARVIS IP CAMERA

STARLIGHT H.265 30M IR

- ▶ H.264, H.265 & MJPEG encoding
- ▶ Sony 1/2.8" STARVIS CMOS Sensor
- ▶ Available in 2MP & 3MP resolution
- ▶ IMX290 chipset - Exceptional low light performance
- ▶ 2.8-12mm lens
- ▶ Built-in intelligence
- ▶ Easy setup remote viewing for PC, Mac, iOS, and Android
- ▶ Vandal proof with IP66 and IK10 protection



NEW

43160032 | DMP30IPW 2MP

- ▶ Sony 1/2.8" STARVIS CMOS Sensor: 2.07 Mega pixel
- ▶ 2.8-12mm lens: Vari-focal lens
- ▶ Connections: Network interface, analog video output & power supply



NEW

43160034 | DMP30IPW2 3MP

- ▶ Sony 1/2.8" STARVIS CMOS Sensor: 3 Mega pixel
- ▶ 2.8-12mm lens: Motorized lens
- ▶ Best suited with the IQ range of NVRs
- ▶ Connections: Network interface, analog video output, power supply, alarm input, RS485/alarm output, Audio intercom input & audio output

STARVIS



IP Cameras



DMP30IPW2
○ 43160034



DMW15IPW
○ 43160002



IN50IPW2
○ 43160131
IN50IPB2
● 43160129



DMM15IPW
○ 43160006



DM30IPW2
○ 43160027
DM30IPB2
● 43160028



IN30IPW2
○ 43160116
IN30IPB2
● 43160118



IN50IPW
○ 43160127
IN50IPB
● 43160125

Sensor	1/2.8" STARVIS CMOS	1/2.8" Sony CMOS Sensor	1/2.8" 3.21MP Sony Exmor CMOS Sensor	1/2.8" CMOS Sensor	1/2.8" CMOS Sensor	1/2.8" CMOS Sensor	1/2.8" Sony WDR CMOS Sensor
DSP	HI3516D+IMX123	HI3516C+IMX323	HI3516D+IMX123	HI3516C+IMX323	HI3516C+IMX323	HI3516C+IMX323	HI3516C+IMX323
Resolution	2048×1536 @ 30fps	1920×1080 @ 30fps	2048×1536 @ 30fps	1920×1080 @ 30fps	1920×1080 @ 30fps	1920×1080 @ 30fps	1920×1080 @ 30fps
Video Compression	H.265/H.264/MJPEG	H.264/MJPEG	H.265/H.264/MJPEG	H.264/MJPEG	H.264/MJPEG	H.264/MJPEG	H.264/MJPEG
IR LEDs	12XIR LEDs	1XIR Array LEDs	3XIR Array LEDs	1xIR Array LEDs	36xØ5mm LEDs	2xIRIII IR LEDs	2xIRIII IR LEDs
IR Distance	25-30M	10-15M	40-50M	10-15M	20-30M	20-30M	40-50M
Lens	2.8-12mm	2.8mm	2.8-12mm	3.6mm	2.8-12mm	2.8-12mm	2.8-12mm
Motorized Lens	●		●				
Angle	92° to 28°	Approx. 83°	92° to 28°	Approx. 83°	92° to 28°	92° to 28°	92° to 28°
IP Rating	IP66+IK11	IP66	IP66	IP65	IP65	IP66	IP66
Signal to Noise Rate	≥50db	≥50db	≥50db	≥50db	≥50db	≥50db	≥50db
Power	DC12V/POE	DC12V/POE	DC12V/POE	DC12V/POE	DC12V/POE	DC12V/POE	DC12V/POE

The Convenience of Motorized Cameras

Wish there was a hassle free way to make adjustments to your camera lens, rather than having to get up a ladder, go back and forth between the camera and monitor to make manual tweaks? Check out our cameras with built-in motorized lens.

The added bonus with these cameras is the ability to change or adjust the zoom and focus remotely over the network using the camera's software.

NO: Getting up ladders
Running back & forth
Hassles!



In a league of its own

Keep an eye on your property 24/7! This unique camera features a 2MP sensor for clear image recording as well as tilt and zoom functions. Powered by PoE, its easy set up and control puts this camera a cut above the rest.

43160140 | **DMZ50IPW**

PTZ DOME IP CAMERA 50-80M IR WITH POE

- ▶ 2MP HD IR network intelligent high speed dome
- ▶ 1/2.8" CMOS sensor
- ▶ Ambarella zoom module
- ▶ Encoding system: H.264 / MJPEG, dual stream output
- ▶ Focal length: 4.7mm - 47mm
- ▶ 10x optical zoom
- ▶ Full HD 1080P
- ▶ Horizontal 360° continuous rotation, 90° vertically tilt
- ▶ Audio alarm input/output

- ▶ MicroSD card slot:
- Accepts up to 64GB
- ▶ Support ONVIF / HTTP / TCP / DDNS / NTP / SMTP / RTSP
- ▶ ONVIF Profile S protocol, GB/T28181 protocol
- ▶ 255 preset, 4 pattern, 4 cruise
- ▶ Lightning-proof, IP66
- ▶ DC24V / PoE



IP Camera Accessories

Extenders



43151235 | IPOC200

200M IP OVER COAX EXTENDER PASSIVE PAIR BANDWIDTH 10Mbps

Transmit IP camera signal over coax

- ▶ Distance up to 200m
- ▶ No power required
- ▶ Built-in surge protection



43151237 | IPOC1KPT

ACTIVE ETHERNET & POE OVER COAX TRANSMITTER ONLY UP TO 1KM

- ▶ 1CH Active ethernet and power transmitter
- ▶ Up to 1km distance
- ▶ Up to three cascading devices
- ▶ Sits on the IPC end



43151239 | IPOC1KR

ACTIVE ETHERNET & POE OVER COAX RECEIVER ONLY UP TO 1KM

- ▶ 1CH Active ethernet and power receiver
- ▶ Up to 1km distance
- ▶ Sits on POE switch end
- ▶ Requires power supply

Connectors



30633930 | PK3930

UTP RJ45 CAT6 8P8C MODULAR SOLID PLUG

- ▶ 8P8C modular plug
- ▶ For solid wire application
- ▶ For CAT6 patch cord application

Cables



05062705 | UNA4PRX7BLK-1MT

UNAPPROVED CCA UTP/CAT5 CABLE SOLID CORE (305M) - (PER METRE)

Perfect for those installing CCTV systems and don't want the cost of RG59U cabling.

- ▶ Economical alternative to expensive CAT6 cabling when used only for video/audio/CCTV distribution.
- ▶ Not approved for typical network/communications networks



05062805 | 4PRX7BLU-1M

CAT5 SOLID CORE UTP CABLE (PER METRE)

High performance 100 MHz Category 5e in-building distribution cable.

- ▶ Unshielded twisted pair (UTP)
- ▶ Compliant Standards EIA/TIA-568 Category 5e
- ▶ Wires per cable: 8 wires/Pairs per cable: 4 pairs
- ▶ 24 AWG solid pairs copper
- ▶ CMR rated & Kink resistant easy to install jacket

Cables



05062825	4PRCAT6BLU-1M	CAT6 SOLID CORE UTP CABLE	Per Metre	●
05064012	C6RBLU	305M CAT6 SOLID CABLE - BLUE	Roll	●
05064014	C6RGRN	305M CAT6 SOLID CABLE - GREEN	Roll	●
05064016	C6RGRY	305M CAT6 SOLID CABLE - GREY	Roll	●
05064018	C6RRRD	305M CAT6 SOLID CABLE - RED	Roll	●
05064020	C6RYLW	305M CAT6 SOLID CABLE - YELLOW	Roll	●
05064022	C6RWHT	305M CAT6 SOLID CABLE - WHITE	Roll	●
05064024	C6RBLK	305M CAT6 SOLID CABLE - BLACK	Roll	●

CAT6 SOLID CABLE

Available in durable 305 metre 5-ply pull-boxes with count-down metre-marking.

- ▶ Conductor Material: Bare Copper
- ▶ 23 AWG (1/0.58 ± 0.02mm)

Outdoor Cables



05062702 | CAT6OUTDOOR
05062703 | CAT6OUTDOOR305

WATER BLOCK TAPE CABLE
305M ROLL

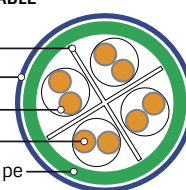
Per Metre ●
Roll ●

OUTDOOR SOLID CORE CAT6 CABLE

- ▶ Outdoor approved
- ▶ Made in Taiwan
- ▶ Water block tape technology—less messy than old jelly filled Cat6

OUTDOOR CAT6 CABLE CROSS SECTION

Separator
PE Jacket
Insulation
Conductor
Water-blocking tape



AHD – Analog HD CCTV

AHD: What is it?

Analog CCTV has held on despite digital technologies entering the market and becoming affordable. This is most likely due to how simple analog cameras are to install and setup – they don't need expert knowledge of networking and don't need infrastructure to be upgraded or newly installed. They also do not suffer from latency issues which make them ideal for real-time monitoring of sites.

Perhaps, with these factors in mind, it's no wonder that the CCTV boffins have figured out a way to bring industry standard, Full HD resolution video using analog technology! Yes, you can get 1080P Full HD video using your Analog CCTV infrastructure. The only hardware you require upgrading is your DVR.

AHD offers uncompressed, real-time transmission over low cost cabling, at distances up to 500 metres! It is designed to be cable agnostic utilising a variety of coaxial cables.

Even if you choose not to upgrade your DVR, upgrading your cameras to our Doss AHD Cameras provides you with the highest quality CVBS image – 800TVL resolution.

AHD—1080P Full HD



Typical 700TVL

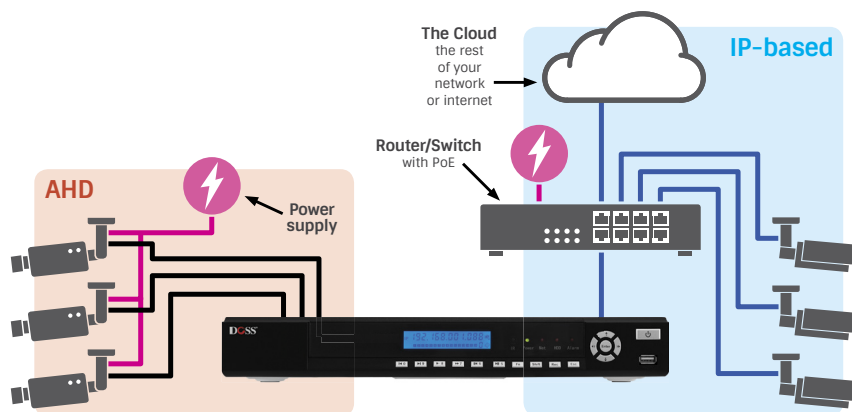


Bridging the divide

Doss' Hybrid DVRs allow you to connect Analog cameras (up to AHD resolutions) and IP cameras, all in one place!

OK, so AHD is great, but you may still want the option to move to IP-based CCTV as cost effectively as possible. Doss has a range of Hybrid NVRs that support analog inputs – up to AHD formats, including 960H – as well as IP Cameras!

This means you can still use your existing cameras and infrastructure, while installing IP Cameras in new installations. Allowing you to take your time upgrading your standard Analog cameras to 960H or AHD.



This is a perfect solution to take advantage of the latest technology without making your entire existing system redundant!

Hybrid Digital Video Recorders

Upgrade your existing analog CCTV system with a Doss Hybrid DVR to future proof it! Keep your existing cameras, while allowing you to upgrade them to AHD, and adding IP cameras to your system!



- ▶ Compatible with 1080p & 720p AHD cameras
- ▶ Supports IPC hybrid access camera recording
- ▶ BNC/VGA/HDMI simultaneous output with 1080P HD preview
- ▶ Sync video recording, playback, remote monitoring & backup
- ▶ Remote access via WEB, Mobile viewer, Client and CMS
- ▶ Supports DDNS, EMAIL, UPNP, NTP and P2P
- ▶ Connections: Video Input, Network Interface, Alarm Input, Alarm Output, RS-485 & USB2.0
- ▶ 15x preview & playback zoom



NEW

43171111 | HBD4DVRV2

4CH HYBRID NETWORK DVR

1080P AHD IP & Analog

- ▶ Supports 4CH x (AHD+Analog) + 4CH IPC, up to 8CH
- ▶ 15 times electronic zoom preview and playback video image
- ▶ EXT alarm, bi-directional talk



NEW

43171123 | HBD8DVRV3

8CH HYBRID 5-IN-1 NETWORK DVR

1080P AHD IP CVI TVI & Analog

- ▶ Supports 8CH x (AHD+Analog+CVI+TVI) + 8CH IPC, up to 16CH
- ▶ 15 times electronic zoom preview and playback video image
- ▶ EXT alarm, bi-directional talk



NEW

43171132 | HBD16DVRV3

16CH HYBRID 5-IN-1 NETWORK DVR

1080P AHD IP CVI TVI & Analog

- ▶ Supports 16CH x (AHD+Analog+CVI+TVI) + 16CH IPC, up to 32CH
- ▶ 15 times electronic zoom preview and playback video image
- ▶ EXT alarm, bi-directional talk

AHD – Analog HD CCTV

AHD, HD-CVI, & HD-TVI



So we've been talking a lot about AHD, but there are actually two other competing Analog HD formats on the market: HD-CVI and HD-TVI. They were all developed to provide real-time, progressive scan, analog HD video, using existing analog CCTV infrastructure. So in this sense, there is very little between them.

The Chinese owned, Dahua brought us HD-CVI. With transmission distances up to 500m, it was adopted as the standard format of the HDcctv Alliance and is an off-shoot of HD-SDI technology. It is also proprietary technology and is only produced by one camera manufacturer, meaning it could easily go the way of Betamax and HD-DVD.

HD-TVI is backwards compatible with analog cameras meaning if your DVR is HD-TVI compatible, you will be able to use your old analog cameras until you want to upgrade them – something

HD-CVI cannot do. HD-TVI chipsets are manufactured by Techpoint (USA) and many big name hardware producers have adopted HD-TVI including Samsung and Hikvision.

AHD is an open format like HD-TVI, but is produced by many chipset manufacturers. Also like HD-TVI it is backwards compatible with analog cameras, reducing upgrade costs. In fact, AHD cameras will still work with your old CVBS DVRs via simple configuration.

So which format do you choose? It seems AHD and HD-TVI are going to battle it out, but in the meantime, you can be confident buying Doss. All new stock of our AHD camera range will work with all four format DVRs: CVBS, CVI, TVI, & AHD!

AHD Cameras



43150240 | DMW15AHDW

DOME WIDE 15M IR AHD CAMERA

Analog HD
2.8MM 1080P

- ▶ 1080P Analog HD output
- ▶ 2.8mm lens
- ▶ 10-15m IR distance
- ▶ Directly replaces existing analog cameras
- ▶ Signal goes through coaxial cable up to 500m
- ▶ White colour



43150250 | DMM15AHDW

DOME MINI 15M IR AHD CAMERA

Analog HD
3.6MM 1080P

- ▶ 1080P Analog HD output
- ▶ 3.6mm lens
- ▶ 10-15m IR distance
- ▶ Directly replaces existing analog cameras
- ▶ Signal goes through coaxial cable up to 500m
- ▶ OSD menu



43150230 | DM30AHDW
43150231 | DM30AHDB

DOME 30M IR AHD CAMERA

Analog HD
2.8-12MM 1080P

- ▶ 1080P Analog HD output
- ▶ 2.8-12mm lens
- ▶ 20-30m IR distance
- ▶ 1/2.8" SONY 2.43MP CMOS sensor
- ▶ Signal goes through coaxial cable up to 500m
- ▶ OSD menu with in-line controller



43150262 | IN30AHD82

BULLET 30M IR AHD BLACK CAMERA

Analog HD
2.8-12MM 1080P

- ▶ 1080p Analog HD output
- ▶ 2.8-12mm lens
- ▶ 1/2.8" SONY 2.43MP CMOS sensor
- ▶ Signal goes through coaxial cable up to 500m
- ▶ OSD menu

UTP Passive HD Video Baluns



43151308 | BVB4201PLHD

HD VIDEO

- ▶ Compatible with HD-TVI, HD-CVI, AHD and CVBS
- ▶ Up to 300m 720P AHD
- ▶ Push in terminal



43151312 | VPB45HD

HD VIDEO+POWER

- ▶ Compatible with HD-TVI, HD-CVI, AHD and CVBS
- ▶ Up to 300m 720P AHD



43151320 | VPB45PCDHD

HD VIDEO+POWER CONVERTER

- ▶ Compatible with HD-TVI, HD-CVI, AHD and CVBS
- ▶ Up to 300m 720P AHD
- ▶ Converts 28V-36V to 12V



43151330 | VPPB45HD

HD VIDEO+POWER+PTZ

- ▶ Compatible with HD-TVI, HD-CVI, AHD and CVBS
- ▶ Up to 300m 720P AHD

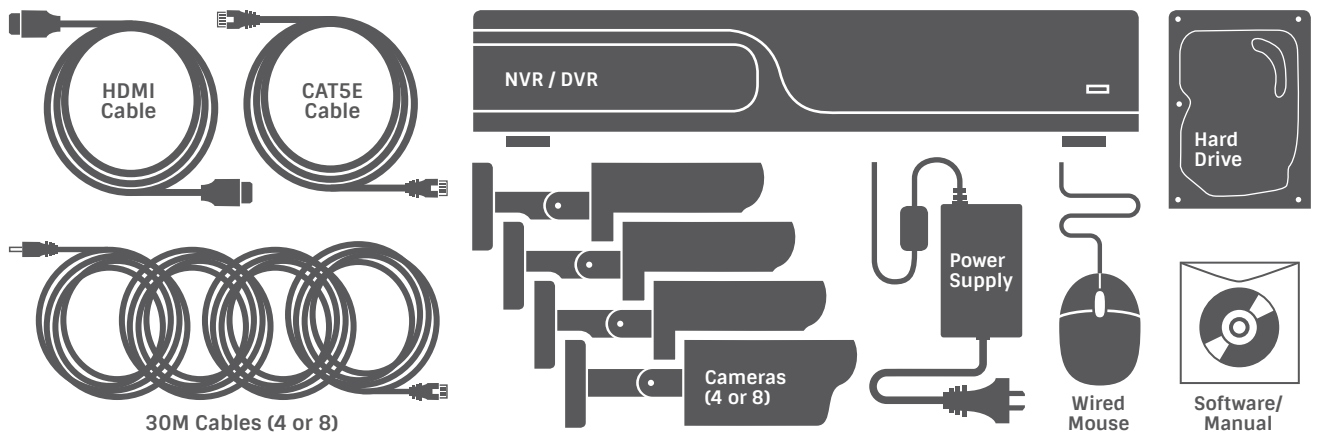
CCTV Kits

All in One CCTV Kits

Have you been shopping around for a CCTV system but couldn't make a decision amongst all the available and confusing options on the market? Are you unsure on which cameras work with which video recorders, what are the ideal cables to use, how to supply power to the entire system, etc?

Well, Doss has worked towards taking away that headache and hassle by making things simple. By tailoring a few CCTV kits together that focus on product comparability and ease of use, we've created a convenient solution that provides you with everything you need for an effective home or work place CCTV system.

Everything you need in one convenient kit



NEW

43171202 | **IP8INK**
43171203 | **IP8INKSC** (Spare Camera)

8CH NVR/1080P IP CAMERA KIT

- ▶ 1080p IP camera x 8
- ▶ 30m IR range
- ▶ Easy remote viewing on PC, Android, or iOS
- ▶ All accessories included to plug and play!
- ▶ 2TB Seagate SkyHawk HDD pre-installed

PLEASE NOTE: The NVR and IP cameras in this kit have been specifically designed to work exclusively with each other. The NVR will not provide POE functionality to third party cameras, nor will the included IP cameras be powered by third party NVRs. For those setups you have to make sure you provide power to the cameras separately.

Kit comes with:

- | | |
|--|----------------------|
| - 1x 8 channel NVR | - 1x HDMI cable |
| - 8x IP bullet cameras | - 1x CAT5E cable |
| - 2TB Seagate SkyHawk hard drive [pre-installed] | - Power Supply |
| - 8x 30m Cat5e cable | - Wired mouse |
| | - Software/Manual CD |

NEW

43171204 | **AHD4INK**
43171205 | **AHD4INKSC** (Spare Camera)

4CH DVR/1080P AHD CAMERA KIT

- ▶ Hybrid DVR up to 8CH, 4CH x (AHD + Analog) + 4CH IPC
- ▶ 30m IR range
- ▶ Easy remote viewing on PC, Android, or iOS
- ▶ All accessories included to plug and play!
- ▶ 1TB Seagate SkyHawk HDD pre-installed

HANDY TIP: This Hybrid DVR allows you to add up to 4CH IP cameras to your system to make it an 8CH DVR.

Kit comes with:

- | | |
|--|----------------------|
| - 1x Hybrid 4 channel DVR | - 1x HDMI cable |
| - 4x AHD bullet cameras | - 1x CAT5E cable |
| - 1TB Seagate SkyHawk hard drive [pre-installed] | - Power Supply |
| - 4x 30m BNC + power lead | - Wired mouse |
| | - Software/Manual CD |

Analog CCTV – Cameras

Factory Quality Control

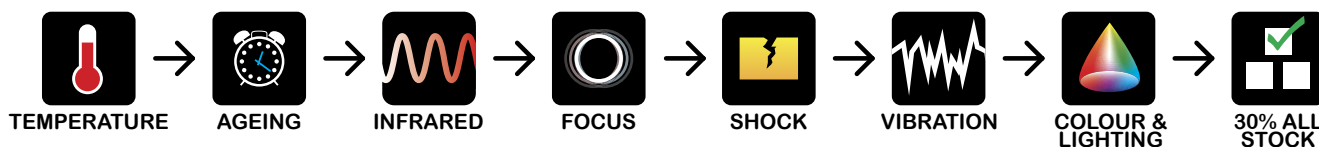
Here at Doss, we strive to provide our customers the best quality products at reasonable prices. As such, our factories adopt manufacturing techniques and strategies that ensure our products meet the highest standards. An inspection to our camera factory showed us just what lengths they go to, to ensure a reliable product.

Unlike some factories, all PCBs are produced and assembled in-house and tested thoroughly before assembly. Any defective circuit boards are able to be diagnosed at chip level and, if possible are repaired.

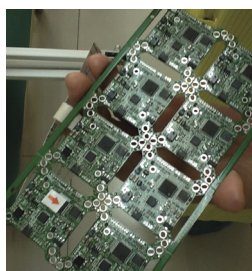
Once assembled, every camera is tested to ensure they operate over their specified minimum and maximum temperature range in a large oven-like machine, and aged for a full 7 days straight before the rest of the testing.

First their infrared capabilities are tested to ensure a quality image in 0 Lux (ie using only the cameras' built-in IR LED lighting). Next the focus is checked using charts. The cameras are then subjected to impact shock and vibrations and rechecked to make sure camera construction is solid. The cameras are then put through their paces in a number of lighting conditions and scenarios, and only those that meet the high standard make it through.

As if that wasn't enough, after all testing is completed, 30% of all cameras in storage awaiting shipping are picked at random, and retested using this method. So you can be confident when you buy a Doss CCTV camera, you are receiving a quality camera!



Factory tour



1 Faulty component identified on PCB to be repaired or replaced.



2 Device used to test products' temperature ranges – like a combination fridge-oven!



3 PTZ controls and Dome cameras half way through their 7-day ageing stage.



4 Factory worker holding the camera behind a curtain, to test it in a completely dark environment.



5 Staff select at random 30% of all completed stock and unpacks them for repeat testing.

Analog Cameras



43150082 | WIDEDOME

700TVL WIDE ANGLE DOME CAMERA

MINI 5-10M IR 2.8MM M12 LENS

- ▶ 1/3" Sony Super HAD II CCD
- ▶ NEXTCHIP 2040 DSP Chipset
- ▶ 700 TVL Resolution
- ▶ Viewing Angle: 120°
- ▶ Lens: 2.8mm fixed focal length
- ▶ IR LEDs: 6x Ø5mm @ 5-10m



43150084 | STEALTHDOME

700TVL SECURITY DOME CAMERA

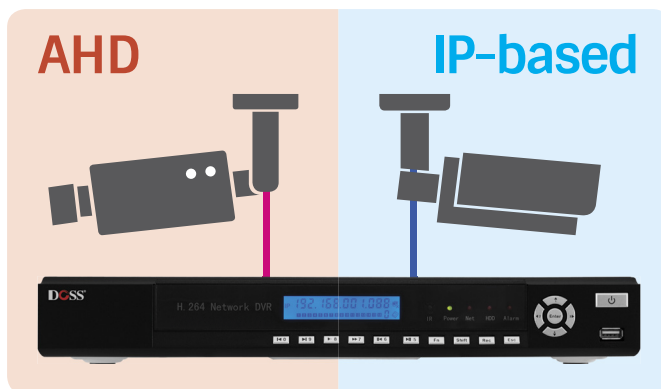
IP65 CCD

- ▶ 1/3" Sony EXview HAD II CCD
- ▶ Sony EFFIO-S DSP Chipset
- ▶ 700 TVL Resolution
- ▶ Viewing Angle: 98°-38°
- ▶ Lens: 4mm - 9mm vari-focal (Korean)
- ▶ IR LEDs: N/A

Have you considered upgrading to a Hybrid?

Want to upgrade your old security system, whilst still using your existing analog cameras? Why not have a look at our range of Hybrid DVRs on **page 7**.

These Digital Video Recorders give you the freedom to use your current analog cameras with the added feature of IP connections should you wish to upgrade to IP cameras in the near future.



Analog CCTV – Accessories

Splitter & Repeaters



43151166 | SDI125P

1-IN 2-OUT

- ▶ Supports: 3G-SDI, HD-SDI, SDI
- ▶ Up to 120m Data Rates



43151176 | SDI45P

1-IN 4-OUT WITH AUDIO EXTRACTION

- ▶ Supports: 3G-SDI, HD-SDI, SDI
- ▶ Up to 120m Data Rates



43151180 | SDI85P

1-IN 8-OUT

- ▶ Supports: 3G-SDI, HD-SDI, SDI
- ▶ Up to 120m Data Rates

Converters



64550062 | AHD2HDMI

TVI/AHD TO HDMI CONVERTER

- ▶ 1 looping TVI/AHD output
- ▶ Max output supports HDMI 1080p@60Hz
- ▶ Up to 300m over coaxial cable



64550065 | SDI2HDMI

SDI TO HDMI CONVERTER

- ▶ 1 SDI loop-out
- ▶ SDI/HD-SDI to HDMI
- ▶ Supports 1080p@25/29.97/30/60Hz
- ▶ HDCP Compliant



64550075 | HDMI2SDI

HDMI TO SDI CONVERTER

- ▶ 2 x SDI outputs
- ▶ SDI/3G-SDI/HD-SDI
- ▶ HDCP Compliant

Lenses



43150860 | SSV0615G

6MM - 15MM VARI-FOCAL LENS AUTO IRIS CAMERA LENS

- ▶ High quality 6 - 15mm
- ▶ CS mount support
- ▶ Aperture: 1.4 - 360°
- ▶ Viewing angle: 54 - 23°
- ▶ Dimensions (LxWxH): 61 x 44 x 38 mm
- ▶ Designed in Japan



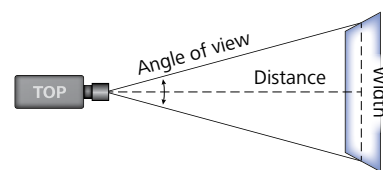
43150854 | SSV0660G

6MM - 60MM VARI-FOCAL LENS AUTO IRIS CAMERA LENS

- ▶ High quality 6 - 60mm
- ▶ CS mount support
- ▶ Aperture: 1.6°
- ▶ Dimensions (LxWxH): 70 x 44 x 50 mm
- ▶ Designed in Japan

Lens zoom or area of view is dependent on several factors – these include the camera's sensor size (eg 1/4" or 1/3"), and the focal length of the lens.

The following table can be used as an estimate for working out: The **angle of view**, the **horizontal width** of view and the **distance** of view.



FOCAL LENGTH	1/4" SENSOR			1/3" SENSOR		
	Deg	Width*	Dist†	Deg	Width*	Dist†
2.0mm	84.0°	18.0m	2.8m	100.4°	24.0m	2.1m
2.8mm	65.5°	12.9m	3.9m	81.2°	17.1m	2.9m
3.5mm	54.4°	10.3m	4.9m	68.9°	13.7m	3.6m
6.0mm	33.4°	6.0m	8.3m	43.6°	8.0m	6.3m
8.0mm	25.4°	4.5m	11.1m	33.4°	6.0m	8.3m
15.0mm	13.7°	2.4m	20.8m	18.2°	3.2m	15.6m
20.0mm	10.3°	1.8m	27.8m	13.7°	2.4m	20.8m
25.0mm	8.2°	1.4m	34.7m	11.0°	1.9m	26.0m
40.0mm	5.2°	0.9m	55.6m	6.9°	1.2m	41.7m
50.0mm	4.1°	0.7m	69.4m	5.5°	1.0m	52.1m
60.0mm	3.4°	0.6m	83.3m	4.6°	0.8m	62.5m

Analog CCTV – Accessories

Common Image Issues



High Frequency Interference

This occurs when cables pick up high frequency EMI – this can even be RF. High frequency sources can also be light switches/dimmers, fluorescent lighting, TVs or CRT monitors, or any other device that switches power quickly. It can cause symptoms that range from rolling coloured bands, to wavy, dynamic patterns over the image. Using twisted pair or balanced cabling is usually the best way to combat such interference.

Recommended Product:

Doss Passive UTP Video Baluns



Ground loops

Ground loops occur when two points, assumed to be the same voltage potential (ie. ground), are in fact different. It generally happens when the camera is not grounded at the monitoring/recording equipment, but at the point it is mounted (or even both locations).

This can result in "hum bars", picture tearing, cross-talk (or ghosting) and image rolling. Fitting a Ground Loop Isolator or rectifying incorrect grounding will fix most issues.

Recommended Product:

GLI02 Ground Loop Isolator



Tips for a great picture

- ▶ Ground signal cables/equipment only at one point – ie the recording system / monitoring end. This also means not grounding the camera bodies or brackets.
- ▶ Keep runs of cable as short as possible and away from interference sources such as high voltage lines.
- ▶ Use quality connectors and cables with correct specifications.
- ▶ Use twisted pair baluns and cabling – this will massively resist electromagnetic interference.

BNC Accessories



1	30256113	PA6113	BNC PLUG TO RCA SOCKET
2	30255720	PA5720	BNC SOCKET TO RCA SOCKET
3	30255701	PA5701	BNC SOCKET TO RCA PLUG
4	30256001	PA6001	BNC PLUG TO BNC PLUG
5	30255990	PA5990	BNC PLUG TO 'F' SOCKET
6	30521038	PG1038	CRIMP PLUG TO SUIT RG59U
7	30256117	PA6117	BNC PLUG TO RIGHT ANGLE BNC SOCKET
8	30521092	PG1092	COMPRESSION BNC PLUG TO SUIT RG59
9	30521001	PG1001	RIGHT ANGLE BNC PLUG SCREW TERMINATED



43158110 CEL5M
43158115 CEL10M
43158120 CEL15M
43158125 CEL20M
43158130 CEL30M

43151075 | GLI02

VIDEO GROUND LOOP ISOLATOR

- ▶ Reduce picture rolling, tearing and noise
- ▶ Weather-proof design. No power required
- ▶ Solve ground loop issues without tracing inaccessible cables

43151078 | VSP01

COAXIAL VIDEO SURGE PROTECTOR

- ▶ Lower insertion loss & quicker response time
- ▶ Large through-flow capacity, long life
- ▶ Easy installation and convenient maintenance

BNC CAMERA EXTENSION LEAD WITH POWER

- ▶ Tamper-proof & Weather Resistant
- ▶ High Quality Connectors
- ▶ BNC Plug to BNC Plug
- ▶ 2.1mm DC Socket to 2.1mm DC Plug

CCTV UTP Passive BNC & RCA Baluns



43151090 | BVB4200WP

WATERPROOF BNC VIDEO BALUN

- ▶ Transmits composite baseband video over UTP up to 400m in real-time. No power required
- ▶ Waterproof. Surge protected



43151096 | BVB4100P

PUSH IN TERMINAL BNC VIDEO BALUN

- ▶ Transmits composite baseband video over UTP up to 400m in real-time. Surge and lightning protected. No power required



43151304 | BVB41025HD

SCREW TERMINAL BNC VIDEO BALUN

- ▶ Real-time transmission over UTP cat 5e/6. Compatible with NTSC, PAL & SECAM video format. No power required
- ▶ HD-TVI, HD-CVI, AHD & CVBS



43151105 | CVB1001

RCA COMPOSITE VIDEO BALUN

- ▶ Gold plated RCA Plug
- ▶ Screw terminal connection
- ▶ Up to 305m

CCTV Testers

Analog CCTV Testers



NEW

43150571 | D305

3.5" PTZ CCTV SECURITY TESTER

12V 1A OUTPUT RS485 AUDIO UTP

- ▶ Compatible with more than 30 protocols including PELCO-D/P, Samsung, Panasonic
- ▶ Video playback, snapshot, video record and playback
- ▶ Analog camera display and PTZ control
- ▶ IP address search and PING testing



43150521 | M035LCD

3.5" PALM WRIST LCD MONITOR

- ▶ 3.5 TFT LCD monitor with OSD menu
- ▶ Video System input: PAL/NTSC
- ▶ Mounting bracket
- ▶ 4x 2500mAh NiMH rechargeable AA batteries
- ▶ Resolution: 480 x 360 pixels



43150580 | M700SDI

7" HD SDI CCTV TESTER

RS485 PTZ LAN UTP CABLE TRACER

- ▶ 7-Inch LCD, 800x600 resolution
- ▶ SDI HD Video in and out; VGA/BNC in
- ▶ Analog video image display and PTZ control



NEW

43150573 | T700A

7" CCTV TESTER

Analog, HD CAMERAS, IP CAMERA

- ▶ 1280x800 Resolution
- ▶ Network Function Testing
- ▶ For Analog, IP, HD-SDI, HD-CVI & AHD Cameras

Mounting Brackets



43150930 | J38
43150936 | J38W
43156125 | J38BW



WALL MOUNT BRACKET FOR DOME30 CAMERA

- ▶ Suits Doss DOME30 cameras
- ▶ Available in Dark Grey or White



43156120 | P06IPG
43156122 | P06IPW
43156130 | P06DW



MOUNTING BRACKET FOR IP CAMERA

- ▶ Ø120mm x 39.5mm
- ▶ Camera mounting holes: 70x70mm



43156005 | CBP001

SMALL BEIGE CAMERA BRACKET

- ▶ Ball and socket articulation
- ▶ Any position or angle possible!
- ▶ Material: Plastic
- ▶ 150X90mm plastic max 3Kg



43156060 | CBA005

ALUMINIUM CAMERA BRACKET

- ▶ 135° tilt / 360° turn
- ▶ Powder-coated cast aluminium
- ▶ Max 10kg camera + housing 300x100x85mm

Analog UTP Baluns

Balun Factory & Quality Control

Finding a Factory

Doss knows how important reliability is when it comes to security systems. We understand installations are often complex, and replacing faulty components once installed can often be a nightmare. And we frankly don't like replacing faulty products!

Not only is reliability an important factor when sourcing products, but so are the features of the products. We want to be proud of the products we sell – so we look for products that give our customers real value for money. Value to us means features and reliability that save you time and money. For this reason we search for factories with the same ethics and take true pride in their products.

That's why we source our products from only the best factories we can find. Doss only chooses factories that have a strong focus on producing a high-quality product our customers can rely on.

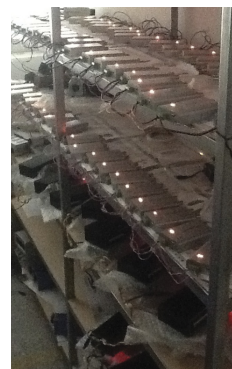
Our range of CCTV Video Baluns have been specially sourced for their quality and reliability.

The factory goes through a stringent quality control process to ensure:

- 1 That all of the balun balance coils are actually manufactured in-house to ensure the components meet the engineers' specifications completely.
- 2 Only the best materials are used. For example, only **100% copper** is used in the manufacture of the balun coils. Not only the quality of the material is important, but more windings are added to the balun coils than typical balun coils, to reduce variation in signal responses.
- 3 All passive components manufactured in-house are tested thoroughly to ensure they are not defective and are within the very tight specifications.
- 4 Every active device produced is worn-in for at least 72 hours before passing testing, resulting in a product you can be sure works out of the box.

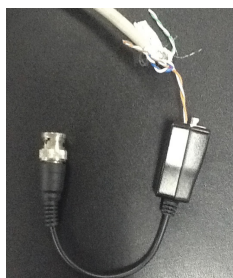


In-house manufacture of balun coils means all parts meet high standards. 100% copper is used to ensure minimal imperfections and impurities, reducing variation in signal quality.



All products produced in-house are tested thoroughly. Every passive component is tested to ensure specifications are met. All active products are aged for a minimum of 3-days.

Balun Design Decisions



Strong durable push-pin terminals can hold up to 10kg of weight – the copper conductor is not sandwiched by flat metal terminals, rather the terminal grips onto the conductor tighter when it's pulled!



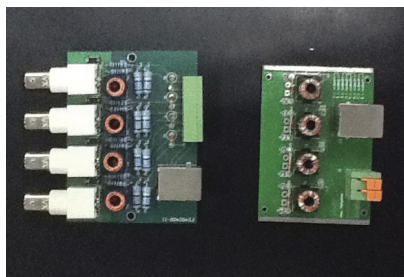
An internal shot of one of our passive video baluns: it may be small but there's a lot in even our basic model. It features a 100% copper balance coil that has finer wire, but more winds for a more uniform winding (helps reduce eddy-currents and therefore improves signal quality).



Our power hubs feature exactly the same components and features as the individual baluns – only possible when a factory produces all their products in-house. This ensures compatibility between all devices and that they all work together with-in specification.



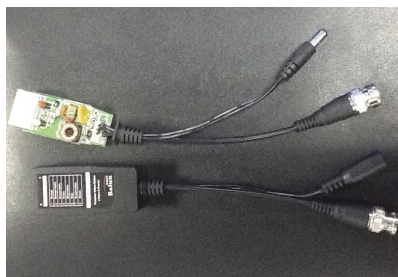
Our baluns (left x2) may look like other baluns (right) but there are some massive differences that you can't see. The conductor pin in our BNC plugs and sockets are 100% copper which improves impedance matching, and reduces signal losses. Our baluns all have built-in surge protection and the balance coils are all specially engineered and tested in-house!



Our Doss passive balun hub (left) vs another brand (right). Components used are over-rated to ensure down-time and maintenance costs are kept low. You can also see there is simply more copper in our balance coils, and the windings are evenly distributed to ensure a nice, clean signal.



There are several different forms that our baluns come in. Sealed for weather-proof installation, small and compact for direct connection to camera bodies, and several different terminations: screw, push-pin, solder, and also RJ45 socket.



Big features in a small package: PTC self-resettable over-current protection, surge protection, quality balance coils and easy to install RJ45 connection.



The new range of screw terminals and push-pin terminals are made from harsh-environment tolerant non-recycled plastics.

Video Balun Power Hubs

Why Baluns?

The Doss Range of UTP Baluns allow you to connect your CCTV system using cheaper, thinner, lighter and more readily available CAT5E cable, rather than expensive and bulky RG59U cable.

The passive (non-amplified) baluns allow transmission of real-time CCTV video signals and power over cost-effective Unshielded Twisted Pair (UTP) cable, without any compression, loss or signal degradation and without the need for extra power supplies to be installed. Sending camera power over the same twisted pair as video means less cabling, and no power supply required to be installed near to the camera. Baseband (composite) signals of any type are supported. In addition, all Doss BNC baluns feature built-in surge suppression to protect video equipment against damaging voltage spikes.



43151135 | BP4CH12V5A

4CH 12V 5A HUB

- ▶ Receive video signal up to 400m
- ▶ Transmit 12VDC power up to 250m
- ▶ Powers up to 4 cameras with built-in 12VDC/5A supply
- ▶ 1 Hub + 4 Video Power Baluns



43151140 | BP8CH12V8A

8CH 12V 8.5A HUB

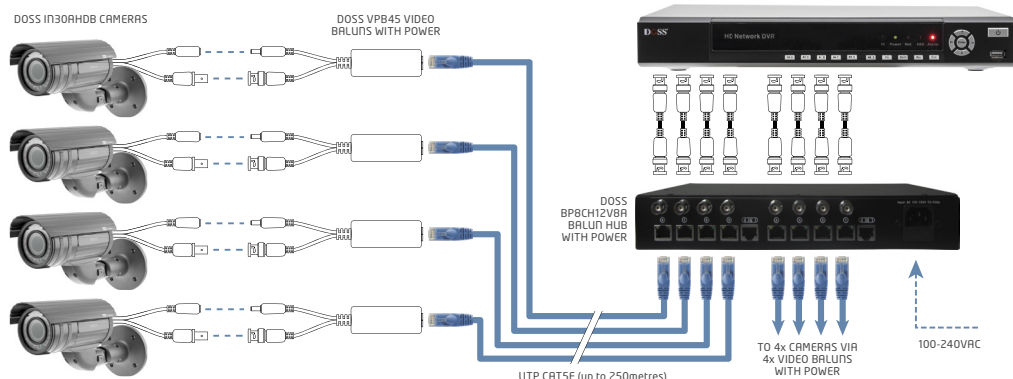
- ▶ Receive video signal up to 400m
- ▶ Transmit 12VDC power up to 250m
- ▶ Powers up to 8 cameras with built-in 12VDC/8.5Amp supply
- ▶ 1 Hub + 8 Video Power Baluns



43151145 | BP16CH12V16A

16CH 12V 16.5A HUB

- ▶ Receive video signal up to 400m
- ▶ Transmit 12VDC power up to 250m
- ▶ Powers up to 16 cameras with 12VDC/16.5Amp supply
- ▶ 1 Hub + 16 Video Power Baluns



UTP Passive Video Baluns with Power+Data



43151205 | VPBPP

VIDEO+POWER

- ▶ Video transmission up to 400m
- ▶ Power transmission up to 250m
- ▶ Interference rejection & surge/lightning protected
- ▶ Push in



43151207 | VPAB45

VIDEO+AUDIO+POWER

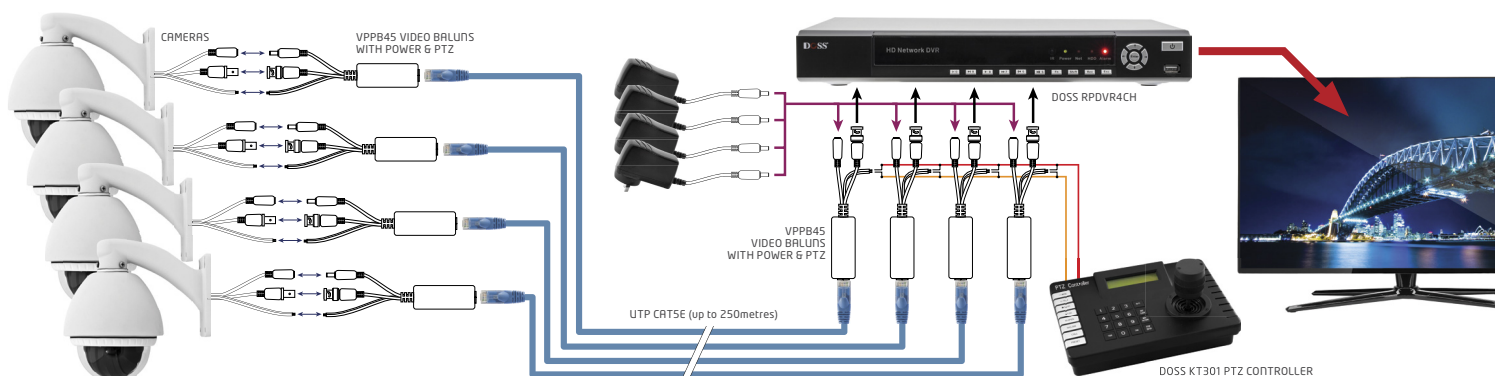
- ▶ Video transmission up to 400m
- ▶ Audio transmission up to 600m
- ▶ Power transmission up to 200m
- ▶ Built-in Transient Voltage Suppressors for surge and lighting protection
- ▶ RJ45



43151225 | VPPBPP

VIDEO+PTZ+POWER

- ▶ Video transmission up to 400m
- ▶ PTZ transmission up to 200m
- ▶ Power transmission up to 250m
- ▶ Interference rejection & surge/lightning protected
- ▶ RJ45



Power & Power Accessories

Wall Mount Power Supplies

The Doss range power supply boxes also known as a power distribution boxes offer a great power solution for CCTV system as well as other systems powered by DC 12V. It enables surveillance system installers to easily manage the power to multiple CCTV cameras at a central

point and allows your camera installation to be neat and secure. The Doss power supply boxes are very simple to install, simply screw each camera's power cable into the power supply terminal inside the power supply box.



PW0412B05
33774960



PW0912B10
33774967



PW1612B16
33774990



PWU0412W05
33775000



PWU0812W10
33775005



PWU1612W16
33775015

Outputs	4-Way	9-Way	16-Way	4-Way	8-Way	16-Way
Rating (Total)	12VDC / 5A	12VDC / 10A	12VDC / 16A	12VDC / 5A	12VDC / 10A	12VDC / 16A
5kA surge protection	✓	✓	✓	✓	✓	✓
Individually PTC protected outputs	✓	✓	✓	✓	✓	✓
Battery Backup / UPS				✓*	✓*	✓*

* Battery not included

Why are PTC resettable fuses so common in Doss products?

For over-current protection and power recovery, PTC fuses are a great solution. If the manufacturer pays a little extra and uses PTCs, the system will require less maintenance and downtime is reduced. They provide protection like a fuse, but are capable of self-resetting, so no maintenance or repair is required when something goes wrong.



33774935 | **PD009**

1-IN 9-OUT POWER DISTRIBUTOR

- ▶ Individually PTC self-resetting protected outputs: 1.1A
- ▶ Individual status LEDs
- ▶ Supports up to 30VAC/VDC



33774940 | **PR816-12R**

8A 16-PORT DC 12V REGULATED PSU

- ▶ 12VDC/8Amp power supply
- ▶ 16x 0.5Amp outputs
- ▶ Individual PTC self-resetting protection on each output



30978204 | **PW8204** 4-WAY
30978208 | **PW8208** 8-WAY

2.1MM SOCKET TO 4X/8X 2.1MM PLUGS

- ▶ 2.1mm DC Power Socket 20cm Lead / 14cm
- ▶ 2.1mm DC Power Plugs with 28cm Lead / 13.5cm



33771335 | **SM1240**

DC Power Supply - 12V/4Amp

- ▶ Switchmode with MEPS class V efficiency
- ▶ Short-circuit protection
- ▶ Auto reset
- ▶ 2.5mm DC plug
- ▶ Mains Cable supplied



33774436 | **SM1540**

DC Power Supply - 15V/4Amp

- ▶ Switchmode with MEPS class VI efficiency
- ▶ Short-circuit protection
- ▶ Auto reset
- ▶ 2.1mm DC plug
- ▶ Mains Cable supplied



33771340 | **SM1250**

DC Power Supply - 12V/5Amp

- ▶ Switchmode with MEPS class V efficiency
- ▶ Short-circuit protection
- ▶ Auto reset
- ▶ 2.1mm Plug
- ▶ Mains Cable supplied



33771345 | **SM1265**

DC Power Supply - 12V/6.5Amp

- ▶ Switchmode with MEPS class VI efficiency
- ▶ Short-circuit protection
- ▶ Auto reset
- ▶ 2.1mm Plug
- ▶ Mains Cable supplied

Why do I need a voltage converter?

There are two common applications – Stepping down higher voltage DC power and secondly, converting from 24V AC power down to 12V DC.

For Doss CCTV, we test cabling and cameras at 100m distance. The biggest limitation to the distance is the voltage drop in the cabling – if you feed 12V into the system, 100m later, you might be left with, say, 7V. If it is a 200m or 300m run, at some point the voltage will be too low to operate the cameras.

One solution is to input say 24V DC and use a voltage converter ensure the supply to the camera is regulated at a safe 12V DC level. 24V AC is also commonly used in security installations. Since all Doss cameras operate on 12V DC, you'll need a voltage converter behind the camera to fit your camera into an existing 24V AC System.



33774925 | PC500

DC/AC TO 12VDC CONVERTER

- ▶ 2.1mm DC plug
- ▶ Regulated output, 500mA max
- ▶ Convert AC: 14-24VAC or DC: 15-30VDC to 12VDC



33774930 | PC1A

DC/AC TO 12VDC CONVERTER

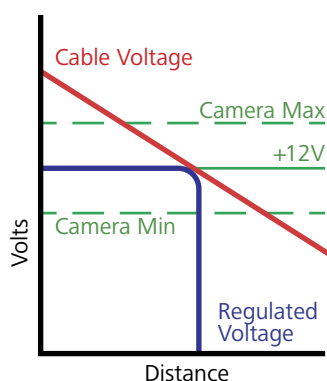
- ▶ Screw Terminals
- ▶ Regulated 1000mA max
- ▶ Convert AC: 18-26VAC or DC: 18-28VDC to 12VDC



30978019 | PW8019

2.5MM SOCKET TO 2.1MM PLUG

- ▶ 2.5mm Socket to 2.1mm Plug
- ▶ Can convert plug sizes of power supplies for use with 2.1mm DC extension and splitter leads



30978018 | PW8018

SCREW TERMINATED DC PLUG

- ▶ 2.1mm DC plug



30978050 | PW8050

SCREW TERMINATED DC SOCKET

- ▶ 2.1mm DC socket



05052023 | RG59U-1M
05052024 | RG59U-100M

RG59U SOLID CORE COAX CABLE

- ▶ 1/Ø0.65mm Copper Clad Steel core
- ▶ Braided screen: 16/7/0.14 OFC(88%)
- ▶ Wave impedance: 72±3 Ohm (@ 200MHz)
- ▶ Capacitance: 73±5pF/m



05062038 | CCTVCOM24-1M
05062039 | CCTVCOM24-100M
05062045 | CCTVCOM24-250M

RG59U & POWER COMBO CABLE

- ▶ Bonded CCTV RG59U and Double Insulated 2 core power cable
- ▶ Easy to install power and video at same time!



FIGURE-8 24/0.2 TWIN-CORE

05093003 | 2X24-.2PB-1M BLACK ●
05093004 | 2X24-.2PB-1M BROWN ●
05093005 | 2X24-.2PW-1M WHITE ○
05093006 | 2X24-.2PG-1M GREY ●

DOUBLE INSULATED FLAT 24/0.2 TWIN-CORE

05093020 | 2X24-.2DSW-1M WHITE ○
05093026 | 2X24-.2DSR-1M RED ●

TWIN POWER CABLE

- ▶ 2-core x 24 strand (0.2mm). PVC Insulation
- ▶ Sold per metre. Available as 100 metre roll



05492050 | 6RCCB 6MM ●
05492051 | 6RCCW 6MM ○
05492060 | 15RCCB 15MM ●
05492061 | 15RCCW 15MM ○

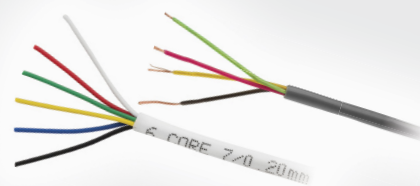
NAIL-DOWN CABLE CLIPS

- ▶ 6mm round cable clip to suit RG59U
- ▶ Pack of 100 pieces
- ▶ 15mm square cable clip to suit bonded RG59U+Power or Twin RG59U cables

Common Wiring Colours

These are common colour codes for various security equipment, however check with your hardware's installation documentation before connecting to an existing system!

4-core	4-core alt.	6-Core
+ PWR	+ PWR	+ PWR
ALARM SIG		ALARM SIG
ALARM GND		ALARM GND
	ALARM SIG	TAMPER SIG
	COM (TAMPER)	TAMPER GND
PWR GND	PWR GND	PWR GND



05062008 | 4X7-.25C-1M 4-core ●
05062024 | 6X7-.25C-1M 6-core ○

4-core / 6-core cable

- ▶ 4-core (4.8mmØ)
- ▶ 6-core (5.5mmØ)
- ▶ Great for alarm signal lines

Warning Signs & Devices

Intimidation Products

Whether you have the budget to install a state of the art security system or require a more economical option to protecting your premises, we at Doss strive to provide you with an ideal solution.

When it comes to security, sometimes intimidation can be an effective means of crime prevention. Keeping that in mind, Doss has developed a range of cost-effective products, from security signage to dummy cameras, that may aid our customers in feeling secure whilst warding off any would-be law-breakers.

Warning Signs



01304704 | SNA4

CCTV VIDEO CAMERA SIGN A4 SIZE ACRYLIC

- ▶ Prominent warning sign for CCTV or dummy surveillance applications
- ▶ Made by acrylic for durability, outdoor weather-ability and UV resistance
- ▶ Easy for installation and maintenance
- ▶ An ideal product for alerting people



01304703 | SN120

CCTV SECURITY SIGN 120 x 120MM ACRYLIC

- ▶ Prominent warning sign for CCTV or dummy surveillance applications
- ▶ Made from acrylic for durability, outdoor weather-ability and UV resistance
- ▶ Easy for installation and maintenance

Dummy Cameras



43150403 | S9179A

DUMMY SECURITY CAMERA SOLAR

- ▶ Includes built-in lithium battery and solar panel charger for illuminating the warning LED



43150406 | DCIN11B
43150407 | DCIN11W

DUMMY BULLET CAMERA WITH LED

- ▶ Powered by 2 x AA batteries (lasts for 3-6 months)
- ▶ 25mm black plastic lens



43150411 | DCDM30B
43150412 | DCDM30W

DUMMY DOME CAMERA WITH LED

- ▶ Blinking red LED light
- ▶ Powered by 3x AA batteries

Presence Detection



01301663 | DEA7WL WIRELESS DOOR/BREAM ENTRY ALARM
01301664 | SPK300 EXTRA/SPARE SPEAKER FOR DEA7WL

WIRELESS DOOR BEAM & ALARM WITH SOLAR PANEL

A compact wireless entry alarm system, easy to install both indoors and out. It is designed for both residential and commercial uses to alert you to the entry of customers and visitors.

- ▶ The speaker sounds whenever the photoelectric beam is broken
- ▶ Ideal for shops or driveways with working beam distance ranging from 0.5m to 7m
- ▶ Wireless range to speaker can be up to 100m
- ▶ Wireless speaker, beam, reflector, solar panel all included



01308066 | PM100

SECURITY PRESSURE MAT / PAD

Floor pressure mats are designed to detect a person treading on them.

- ▶ High impact PVC material
- ▶ Trapped air cushion
- ▶ Size: 800x540mm



01305510 | RSC40

ROLLER-DOOR REED SWITCH

Heavy duty reed switch for roller doors

- ▶ N.C. contacts
- ▶ Reed switch size 88x38x10mm
- ▶ Armoured cable length 280mm

Video Intercoms

Video Intercoms

The Doss DHF Hands-free Video Intercoms are an economical, convenient solution for any home security. Give yourself some peace of mind with the ability to see who's at your door before opening it!

Multiple configurations are possible with up to 2 door stations and up to 3 monitors. You can even mix and match between the models to create the video intercom system that suits you and your home!



21816221 | **DHF42PC** 4" MONITOR & CAMERA KIT
 21816226 | **DHF42SM** EXTRA 4" MONITOR
 21816217 | **DSPC72** EXTRA DOOR CAMERA CCD
 21816218 | **DSPC42** EXTRA DOOR CAMERA CMOS

4" HANDSFREE VIDEO INTERCOM

- ▶ 4" colour LCD with 960x240 effective resolution
- ▶ Hands free and door lock
- ▶ Surface mount CMOS Camera
- ▶ 4 wire system



21816230 | **DHF72C** 7" MONITOR & CAMERA KIT
 21816227 | **DHF72SM** EXTRA 7" MONITOR
 21816232 | **DSC72** EXTRA DOOR CAMERA

7" HANDSFREE VIDEO INTERCOM

- ▶ 7" colour 800x600 HD TFT LCD
- ▶ Capacitive touch-buttons
- ▶ Hands free and door lock
- ▶ Slim design surface mount CMOS Camera
- ▶ 4 wire system

Configuration Examples

2 Cameras to 2 Monitors



1 Camera to 3 Monitors



	1	2	3
1	✓	✓	✓
2	✓	✓	✗

Connecting to Access Control System



Alarm Systems



MARKED STOCK refers to the markings on the black rubber finish of the main phone unit, which is believed to be caused by extreme heat affecting the protective plastic on the stock whilst in transit and storage. Despite these markings, all units are fully functional, un-opened, un-used and maintain normal manufacturer's warranty.



01301035 | **WDA-M**

WIRELESS ALARM PHONE SYSTEM KIT (MARKED STOCK)

- ▶ Wireless security alarm system with built-in phone
- ▶ Simple DIY installation within minutes – no wiring needed
- ▶ Choice of 24/7 back-to-base monitoring or self-monitor
- ▶ Remote control for Arming and disarming (ON) and (OFF)
- ▶ Medical Alert remote control (water resistance)
- ▶ Up to 100 sensors for multiple room window security

01301026 | **WDA-RC**

SPARE REMOTE CONTROL FOR DOSS WDA-KIT

- ▶ Remote Control
- ▶ Power Supply 12V 27A
- ▶ Transmit Frequency: 433.92MHz ± 100kHz
- ▶ Transmit Distance: 100 metres (open area)

Starvis Cameras



SONY
STARVIS

Good-bye IR! There's a brand new Doss range that brings outstanding visibility under star light!!

With the introduction of the Sony Square Pixel Array Colour CMOS Image Sensor, these Doss cameras can now capture colour video at night without the use of artificial light.



Naked Eye



Conventional

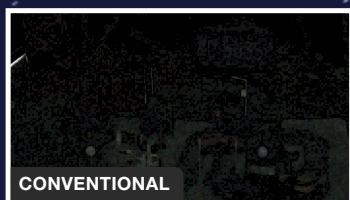


STARVIS

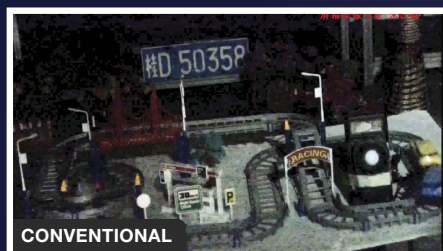
It features a sensitivity of 2000mV or more per $1\mu\text{m}^2$ (colour product, when imaging with a 706 cd/m² light source, F5.6 in 1s accumulation equivalent), producing a picture with more detail and colour.

As well as the ability to adjust brightness levels and switch on/off via IP (web) control.

Below is a comparative example of the new IMX290 with Sony Sensor performing in low light conditions against 2 other conventional cameras.



CONVENTIONAL



CONVENTIONAL



NEW IMX290



NEW

43160032	DMP30IPW	2MP
43160034	DMP30IPW2	3MP

DOME STARVIS IP CAMERA
STARLIGHT H.265 30M IR

► See Page 4 for more details!

STARVIS

 **Video online**



CALL

1800 337 366
FOR DOSS SUPPORT

OR



VISIT

DOSS.COM.AU
FOR PRODUCT MANUALS,
INFOSHEETS & DEALER LIST