

Electronics & Components

ISSUE 153 // NOV 2018

BRING THE STAGE INTO YOUR LIVING ROOM

See page 2-4

EARTHQUAKE SOUND
Sound That Will Move You.



YAMAHA
TRADE & SAVE
PROMOTION

Page 5



ATEN
SOLUTIONS
FOR BETTER
CONNECTIONS

Page 6



SENTRY
LITHIUM
BATTERIES

Page 7

Weekly Special
Every Wednesday at 3pm
www.radioparts.com.au

View it online
Catalogue also available
as an e-mag online

SUBSCRIBE to our email newsletters and stay up to date with new product arrivals!
Scan the QR code on your mobile or visit www.radioparts.com.au to sign up.





SOUND THAT WILL MOVE YOU.

Joseph Sahyoun is the head honcho of Earthquake and also one of the most eccentric engineers that you're likely to meet, but before we start talking about Joseph, let's rewind. We visited Earthquake Sound on a beautiful, sunny San Francisco day in September. Earthquake is based near the bay in Hayward, a stone's throw from the rapidly expanding Silicon Valley. Staff are busy building the product and since it's still a family business, the Sahyoun sons and Joseph's brother Abraham are organising shipments, working on new software DSPs and at the same time speaking with distributors in both China and Canada. Only a week before, we had met Joseph at CEDIA in San Diego, California. In typical Joseph style, he launched into a wildly technical explanation; never bothering to ask who we were, and whether or not we understood what he was explaining.

FIXING ALL AUDIO PROBLEMS

A week later, Joseph rambles into the office, bluntly asking what we were doing there. I said that we're here to learn more. Earthquake Sound is one of the most profitable brands for many of our clients, so maintaining this involves continual education. Joseph, bored by my chatter, yells to a passing colleague, "Bring me a HUMKLEANER". He grabs the product and pliers it open. I came to understand that Joseph would do this to any product that came into his possession. In fact, on that visit, he pried open the Voltage Reducer (model HLLC200), a pair of Beats headphones and even a HP printer cartridge.

With the box now open, he proclaims "This is the best headphone accessory." From what I understood of his explanation, the lifting of the earth (floating earth) and pre-amplification, made the Humkleaner a great headphone preamp. I explained that we had success in the commercial PA market for removing ground loops.

He's excited to hear that it has solved these issues and immediately launches into other applications, asking about impulse noise. He's rarely interested in your answer and more interested in explaining his point. One end of the unbalanced [RCA] connection is floating and one end is grounded making it ideal for long audio runs. The loss of voltage is a big issue when running larger distances. In this case, the hefty preamp in the Humkleaner boosts the signal voltage, while at the equipment end, the HLLC200 Voltage Reducer drops the signal back to line level. The HLLC200 has a left and right output, but also a GND, B+ and REM output. These additional outputs can be used as a DC trigger. With the addition of a 12V DC power supply, it can be used to automatically turn on equipment that's in a remote location. The Humkleaner and HLLC200 are designed to fix a whole array of audio issues.

HUMKLEANER TWO CHANNEL CONVERTER HUM KLEANER | 39816226

The Hum Kleaner provides two channels of unbalanced-to-balanced level conversion and two channels of balanced-to-unbalanced level conversions in a resilient, compact, and portable unit.

RSP INC
\$179

LINE OUT CONVERTER 4-CHANNEL SIGNAL OUTPUTS

HLLC200 | 01458400

It can reduce the high-power output of an amplifier to that of a low-level signal input in RCA down to between 0.1 and 6 Volts.

RSP INC
\$49.95



A CRASH COURSE IN SPEAKERS

Earthquake Sound is world renowned for their subwoofers, but listening to Joseph, I realised that these guys are sound engineers at heart. He had a remarkable ability to explain speaker fundamentals, so here are a few golden gems that I gleaned from his mad scientist rant.

TITAN THEIA - CENTRE CHANNEL SPEAKER

TITAN THEIA | 39816710

First, the centre channel of home cinema is the most important channel, yet it's usually a compromise. The centre channel is credited for handling the speech dialogue in movies (commonly 1kHz), but it's also responsible for guns, revving engines and Vin Diesel's inaudibly low voice. So the Centre covers all the action that's occurring in the middle of the screen. Since every Hollywood movie is also mixed to an 80Hz crossover, your centre channel must not roll off before 80Hz or you'll be missing information (bass). The Theia looks unusual, but it's one of the few centre channels that is capable of delivering the full frequency spectrum thanks to a hefty 10" passive driver that's hidden underneath the cabinet. His rant was more focused on the shortcomings of most centre channels, but rest assured that the Theia has loads more tricks. If you can visit Radio Parts or an Earthquake stockist, then it's worth getting a demo.

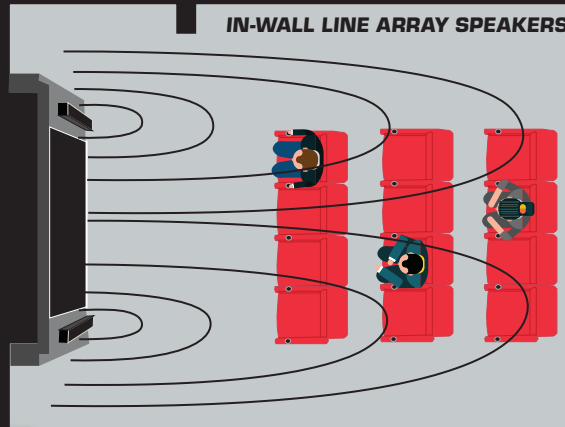
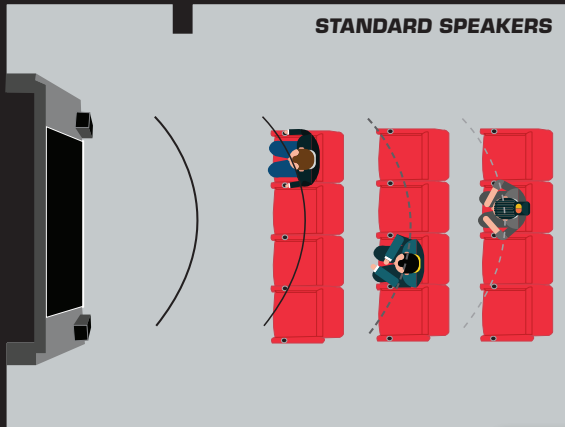
RSP INC
\$1,430



EARTHQUAKE LINE ARRAY

Line Arrays are used to disperse sound through the room. This makes Line Array technology ideal for LCR (left, centre, right) configurations in home theatre as the

sound is highly directional. It also copes well with various viewing distances. If a home theatre has seating in rows, you must use Line Array speakers to keep sound levels consistent throughout the room.



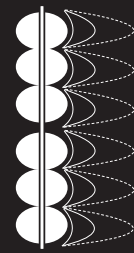
6.5" EDGELESS INWALL SPEAKER (PAIR)

EWS600 | 39816045
RSP INC
\$449



IN-WALL LINE ARRAY LCR SPEAKER (SINGLE)

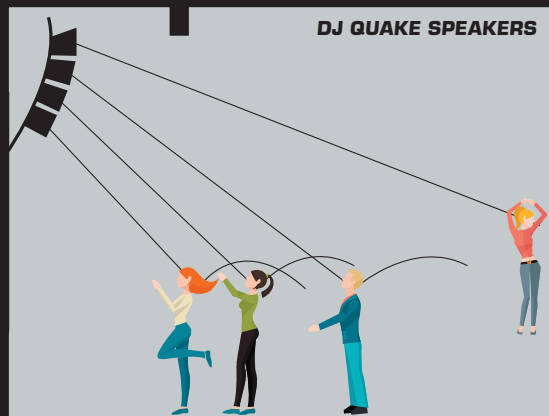
EWSLA63 | 39816090
RSP INC
\$715



The earthquake DJ Quake is also an example of Line Array technology. People seated close to the speakers receive sound from the first (bottom) speaker. People furthest away will hear a similar SPL level, as they receive sound from all 4 speakers, as represented below. Earthquake were saying that their Chinese distributor supplies the Line Array speakers on their own to large restaurants.

These restaurants position a few arrays on the walls, which disperses sound evenly around the large space. They use independent subwoofers if they need extra bass reinforcement.

If you'd like to use Earthquake for special projects, then let us know. They are happy to accommodate, however since the product comes from San Francisco, we will need sufficient notice.



DJ QUAKE SET BUILT-IN 1000W AMPLIFIER

DJQUAKE2.1 | 39814330

The DJ-Quake 2.1 a revolutionary, portable, all-in-one Line Array system with performance that matches perfect with bars, restaurants, DJs, houses of worship and most other medium sized venues.

Set includes:

- 2x 4x4" Array Speakers
- 1x 12" Subwoofer

RSP INC
\$990



CEILING SPEAKERS FOR DTS-X AND DOLBY ATMOS

3" CEILING SPEAKER CLOSED BACK (SOLD PER SINGLE)

ACS3.0 | 39816012

Object based DSPs, like Atmos or DTS-X, tend to involve 2 or 4 dedicated ceiling speakers to deal with all the overhead action in movies. When viewing movies like Alien: Covenant, you would hear the dripping from the roof of the cave or space craft flying overhead. These new immersive digital sound modes are fantastic with viewers having a sensation of being in the middle of the movie. When Dolby first released Atmos, we were told that 'normal' ceiling speakers are fine. 6 years on and Joseph is on a crusade, explaining that speakers like the ACS3.0 are a better choice when compared to larger speakers, like the ECS6.5 or ECS8.0. He was enthusiastically saying that he expects something from Dolby shortly, confirming Earthquake's findings. The ACS3.0 is cheaper than the bigger ECS8.0, but as Joseph's brother Abraham explains, he's first and foremost an engineer. The business aspects need to often take a backseat!

RSP INC
\$89



Dimensions:

Physical diameter: 80.5mm
Cut-out hole: 74mm
Mounting depth: 60mm

PASSIVE RADIATOR DESIGN, XJ AMPLIFICATION & EARTHQUAKE'S NEW DSP

We all know that watching movies without subwoofers should be a jail-able offence, but by the same token, we're increasingly seeing some pretty lacklustre Chinese and Taiwanese subs hitting the market. Some of these manufacturers have gained some global notoriety, though Joseph wasn't lauding praise on them. In the subwoofer world, there's a healthy amount of argument about whether subs should be ported or sealed. Joseph believes that passive radiators are the best design and he is more than willing to prove it. Passive radiator designs are not the sole property of Earthquake. Their Californian counterparts at Sunfire also do a fantastic job building powerful subs in a small form factor. This design produces a fantastic amount of power due to a kind of momentum between the speaker driver and the radiator.

The passive radiator design is very efficient in its own right, but Earthquake also employ highly efficient Class XJ amplification. Class XJ amplification borrows aspects of both Class D digital amplification and Class B analogue amplification.

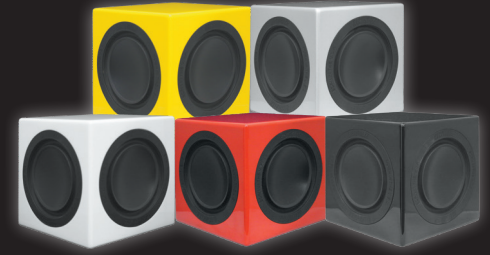
During our recent visit to Earthquake, we saw the new Minimep67 redesign. The passive radiators are now disguised behind sleek cabinetry. They also showed us their MK commercial sub. The MK guts are the same, but it now features a hard wearing, commercial cabinet.

If you punch in this URL <https://bit.ly/2NFTiw0>, you'll see a Supernova MKVII subwoofer in slo-mo operating at 16Hz. 16Hz is below the hearing spectrum for humans, though the big Earthquake subs maybe one of just a few in the world that perform without any damage to the speaker or cabinet.

We also got our first hands-on experience with their new DSP. Using your iOS or Android device, you pair with your MINIME or MK sub via Bluetooth.

The sub then makes a bunch of noises, much like when you perform the set up of home theatre amplifiers. The frequency response is measured 3 times. From there, you can manage the acoustics of the room. In our case, it adjusted the phase and flattened the EQ without us having to move the subwoofer. This DSP will allow users to place the subwoofer in the most convenient location and the App will do the rest. While the App is simple, there is also a paid Pro version with additional functionality.

The final discussion involved the unique DSP in all current MK subwoofers. Joseph was saying that 2 or 4 MK subs are ideal for most home cinema rooms. The MK sub should be connected to the subwoofer output of your AV receiver. Users are also encouraged to connect their Front Left and Front Right preout to each subwoofer. The preouts are attenuated by 3dB, so the MK will give the user a degree of soundstage and yet also provide the room with an even dispersion of sound.



MINIMEP63 3 SIDED 6.5" SUB

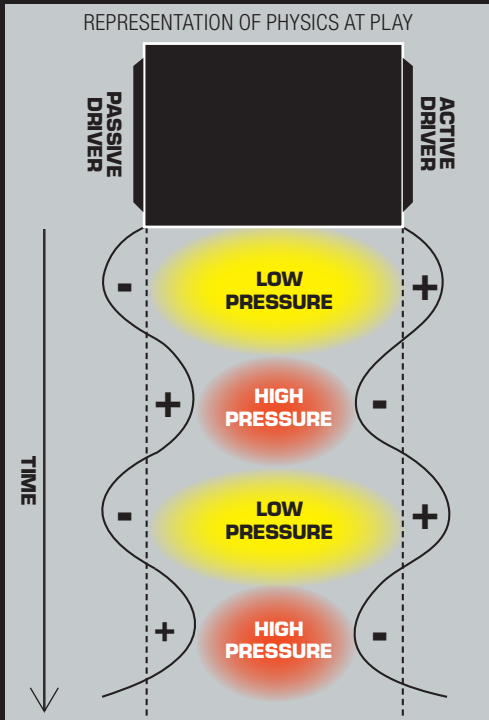
- MINIMEP63W | 39816212
 - MINIMEP63B | 39816210
 - MINIMEP63Y | 39816218
 - MINIMEP63S | 39816216
 - MINIMEP63R | 39816214
- RSP INC**
\$699

SUPERNOVA MKVII SUBWOOFER



MKVII15FF | 39816172 (15")
RSP INC
\$3,699

MKVII12FF | 39816170 (12")
RSP INC
\$3,499



POWER

Technologies such as audio formats, DSPs, channels and processing may change every year, but every speaker requires a power supply. This power comes from either an [integrated] AV receiver or a power amp. Whichever option you choose, remember, you can never have too much power. Earthquake knows this, hence the reason why they supply us with the most powerful amplifiers in their category. "Matching" amplifiers to speakers inevitably leads to clipping and burnt out speaker coils.

Imagine a sine wave. As you push a standard amplifier to its limit, it'll max out or "clip". That sine wave will be flattened, sending a constant voltage to the speaker coil. Cheaper speakers, in particular, will have smaller coils, less heat dispersion and glues that cannot cope with high temperatures. The result will be a blown speaker. No distortion for a warning, just a destroyed speaker.

If you had a powerful amplifier connected to small speakers, you could potentially destroy the speakers, but they will distort well before damage occurs. So imagine a hot light bulb. Whether the light bulb is 100W or 60W, you can tap it repeatedly without burning yourself. No damage is done. If the amplifier is clipping, its like wrapping your hand around that light bulb. Eventually, you'll burn yourself. Earthquake also use digital amplification which is lightweight and efficient. XJ300, XJ700 and XJ1000 digital amps are used to power outdoor speakers, additional zones, or even transducers (aka seat shakers). The analogue toroidal amps are used for home theatre. They sound amazing and give even inefficient speakers dynamics that need to be witnessed. Unfortunately, in the home theatre world, power and weight are inextricably linked, so installing a Cinenova is a two person job!



As a side note, this year's CEDIA Expo featured sound rooms from the likes of Yamaha, Sound United (aka Denon), Epson and more. Every demo room contained either 2 or 3 dedicated power amps, so don't be shy when specifying power amps!



7CH 170W AMPLIFIER RACK-MOUNTABLE

CINENOVA7B | 39815910
RSP INC
\$3,900





EXPERIENCE THE ULTIMATE SOUND STAGE WITH FORMIDABLE BASS

MUSICCAST 8" 130W WI-FI SUB

SUB100 | 39818237

A great addition to your audio setup, the Yamaha NSNSW100BG MusicCast SUB 100 Subwoofer delivers crisp, thunderous bass, giving you an enjoyable listening experience.

RSP INC
\$699

- Ability to be used as wireless subwoofer with selected MusicCast models
- Twisted Flare Port technology
- Auto crossover and frequency adjustment via paired master device
- Modern piano black gloss finish

MusicCast
YOUR HOME OF SOUND



NEW



A STEP INTO THE FUTURE WITH A TRIBUTE TO THE PAST

MUSICCAST VINYL 500 TURNTABLE

TTN503B | 60818040

Meet Yamaha's game-changing wireless turntable designed for a new generation of audiophiles. Featuring MusicCast multi-room capabilities, share the joy of your record collection wirelessly with any other MusicCast device for seamless listening.

RSP INC
\$899



MusicCast
YOUR HOME OF SOUND
amazon alexa



BELT DRIVE TURNTABLE WITH SWITCHABLE PHONO PREAMP

TTS303B | 60818045

The straight tonearm and rigid body deliver authentic sound from old and new vinyl collections.



NEW

TRADE PRICE EX RSP INC
\$599



DISCREET. SOPHISTICATED. POWERFUL.

5.1CH SLIM NETWORK RECEIVER

RXS602 | 01618728

Compact, high-quality 5.1-channel network AV receiver with enhanced functionality and advanced features.

- Power: 95W per ch
- Ability to add wireless surround speakers/sub
- HD Audio with CINEMA DSP 3D
- HDMI (4-in/1-out)

RSP INC
\$899



NEW

5.1CH HDCP2.2 AV RECEIVER

HTR4072 | 01618773

Enter a world of smart home entertainment.

- Power: 115W per ch
- Music streaming services built-in
- HD Audio with CINEMA DSP 3D
- HDMI (4-in/1-out)

RSP INC
\$679

NEW



DESIGNED FOR CUSTOM INTEGRATION OF WHOLE HOME AUDIO SYSTEMS

4 ZONE 8CH MUSICCAST MULTIROOM STREAMING AMPLIFIER

XDAQS5400RK | 01614730

Streams four zones of audio per unit, expandable to 32 zones with linked groups of up to 20 zones each. Eight channels of audiophile-grade Class D amplification assignable to any zone. Built-in Spotify Connect, TIDAL, Deezer and Net Radio.

RSP INC
\$2,999

NEW



MusicCast
YOUR HOME OF SOUND



4 ZONE 8CH MULTIROOM AMPLIFIER

XDAAMP5400RK | 01614735

- Expansion option for Yamaha XDA-QS5400RK
- Eight channels of audiophile-grade Class D amplification
- Four audio buses and included jumpers
- Audio sensing inputs, IR I/O and more

RSP INC
\$1,999

NEW



TRADE & SAVE PROMOTION - SAVE UP TO \$500

Come in store and trade in your old functioning amp and get up to \$500 off your chosen Yamaha Aventure AV receiver. Trade & Save Promotional Offer runs from 1st October 2018 through to 31st January 2019.

\$500 OFF inc.
for CXA5100B, MXA5000B,
CXA5200B, MXA5200B,
RXA3080B

\$400 OFF inc.
for RXA2080B

\$300 OFF inc.
for RXA1080B

\$250 OFF inc.
for RXA880B

\$100 OFF inc.
for RXA770B





EACH MONTH ONE OF OUR SALES REPS RECOMMENDS THEIR FAVOURITE PRODUCTS.
BEN MARSHALL'S PICK ✓



Does anyone else choose their daily coffee haven on a combination of coffee quality, friendly staff and audio quality? Or is that just me?

These two amplifiers are my favourite all-in-one professional solution for small retail spaces, boardrooms, classrooms, medical offices and the like.

It doesn't have Wi-Fi/App control or Bluetooth built-in (although there could be a pricier model with Bluetooth coming), but I'm not necessarily a fan of those features for commercial jobs anyway. Limited range for Bluetooth gets annoying, and if you've got open Wi-Fi for your customers, how do you stop them playing "Despacito" on repeat? Still, you've got enough inputs to add a Bluetooth or WiFi receiver if the customer insists.

They're available in both rack-mount (IMA200) or wall-mount (IMA202) versions and they'll give your customer a big step up from a salvaged micro-HiFi from the owner's shed!

2CH MEDIA MIXER AMP
 2X 80W @ 4Ω FM TUNER & MP3 PLAYER



IMA200 | 01451340
RSP INC
\$540

MEDIA MIXER AMP WALL MOUNTABLE
 2X 80W FM TUNER & MP3 PLAYER



IMA202 | 01451345
RSP INC
\$615

These have got all the things you'd want from a small professional amp – enough power to run two or four speakers for better-than-background sound, FM tuner, USB/SD player, direct input for a phone/tablet/PC, microphone input, and simple controls.



INNOVATIVE SOLUTIONS TO MAKE BETTER CONNECTIONS

USB-C DUAL MINI DOCKS

- Supports 4K (UHD) resolutions via single display output
- Supports dual-display video output up to 1920x1080 simultaneously
- Plug and Play – no drivers or external power adapter needed

RSP INC

UH3231AT 09050794 USB-C TO DUAL-DISPLAYPORTS

UH3233AT 09050790 USB-C TO DUAL-HDMI

\$148.50



HDMI & VGA HDBASET TRANSMITTER WITH EU WALL PLATE

VE2812EUT | 07350890

Extends HDMI or VGA signals over a single CAT5e/6/6a.

- Superior video quality: HDMI: 4K at distance up to 100m | VGA: 1600x1200 and 1920x1200 up to 100m
- Supports HDBaseT Long Reach mode – up to 150m
- Supports Auto Switch

RSP INC
\$699



MULTICAST HDMI WIRELESS EXTENDER

VE849 | 64600190

The VE849 extends your HDMI display up to 30m from the HDMI source to up to four separate receivers, wirelessly. Easily connect up to two HDMI source devices, a local HDTV and, at up to 30m away, you can connect up to four receivers to four HDTVs. One VE849R receiver comes in the kit, more can be bought separately. The image quality at 1080p is crystal clear, with 5.1ch Dolby digital audio and 3D technology. The included IR remote control also allows you to switch between the two HDMI sources remotely from the receiver end.

RSP INC
\$1,320



MOUNTS AN AMAZON ECHO DOT (2ND GEN) INTO ANY WALL OR CEILING

ECHO DOT 4.5" MOUNT KIT
 ROUND/SQUARE MAGNETIC TRIM COVERS
 VOICEDOCK | 43136462

Installed in every room, it creates the ultimate custom integration voice control smart home by harnessing the technology of Amazon Alexa.

- 1x spring clip mount with either 4.5" Round or Square magnetic trim plate

RSP INC
\$49.95

NEW

Echo Dot not included.

ROUND OR SQUARE FACE PLATE



SENTRY UP TO 8 TIMES THE CYCLE LIFE COMPARED TO EQUIVALENT SLA

LITHIUM BATTERIES

Sentry Lithium is a premium range of batteries consisting of the highest quality Lithium Iron Phosphate (LiFePO4) composition. Lithium Iron Phosphate (LiFePO4) has been selected for the Sentry range due to its convenient cell voltage, high energy density and cycle life and most importantly due to it being one of the safest Lithium technologies available.

The Sentry Lithium range comes with all the benefits of LiFePO4 conveniently designed into standard 12V Sealed Lead Acid (SLA) case sizes for easy replacement. With up to 8 times the cycle life of standard SLA technology - Sentry Lithium will lower your total cost of ownership and provide you with the latest in battery technology.

HIGH CYCLIC APPLICATIONS

- Mobility Vehicles
- Recreational Vehicles
- Caravan / Camping

FAST CHARGE REQUIREMENT

- Medical Devices
- RC Devices
- Boats / Recreation

LOW WEIGHT APPLICATIONS

- Boats
- Golf Carts
- Personal power – Lighting, cameras etc

LOWER TOTAL COST OF OWNERSHIP

- Up to 8 times the cycle life compared to equivalent SLA
- Saving up to 50% in battery hardware costs over the life of the system
- Reduction in labour replacement costs by up to 7 times
- Greater capacity utilisation (80% vs 50%) allows reduction in overall system size

- High energy density (less than half of the weight of SLA)
- Flat discharge curve
- Extremely low self-discharge rate
- Large number of cycles > 2000 (100% DoD)
- Fast recharge
- Greater capacity utilisation 60% more than SLA



BLUETOOTH VERSIONS AVAILABLE MONITOR THE HEALTH AND STATE OF YOUR BATTERY FROM YOUR PHONE

NEW



MODEL	CODE	Description	Nominal Voltage	Nominal Capacity (AH)	Terminal	Length (mm)	Width (mm)	Height (mm)	Weight (KG)	Max Discharge Current	Max. Series/ Parallel Configuration	RSP INC
SNL12V9	03296258	12V9AH	12.8V	9Ah	F2	151	65	96	1.1kg	9A	4P	\$155
SNL12V12S	03296235	12V12AH with 4 series functionality	12.8V	12Ah	F2	151	98	96	1.6kg	15A	4P OR 4S	\$220
SNL12V20S	03296237	12V20AH with 4 series functionality	12.8V	20Ah	M6	180	76	166	3.0kg	30A	4P OR 4S	\$314. ⁵⁰
SNL12V20BT	03296260	12V20AH with Bluetooth	12.8V	20Ah	M6	180	76	166	3.0Kg	30A	4P	\$380
SNL12V24S	03296240	12V24AH with 4 series functionality	12.8V	24Ah	M6	166	176	125	3.4Kg	30A	4P OR 4S	\$385
SNL12V40S	03296243	12V40AH with 4 series functionality	12.8V	40Ah	M6	194	132	170	5.5kg	30A	4P OR 4S	\$585
SNL12V75S	03296245	2V75AH with 4 series functionality	12.8V	75Ah	M8	260	169	215	9.8Kg	50A	4P OR 4S	\$1,089. ⁵⁰
SNL12V100S	03296247	12V100AH with 4 series functionality	12.8V	100Ah	M8	306	168	215	12.2Kg	100A	4P OR 4S	\$1,575
SNL12V100BT	03296262	12V100AH with Bluetooth	12.8V	100Ah	M8	306	168	215	12.4Kg	100A	4P	\$1,795
SNL12V125S	03296250	12V125AH with 4 series functionality	12.8V	125Ah	M8	318	165	215	14.8kg	100A	4P or 4S	\$1,675
SNL12V125BT	03296264	12V125AH with Bluetooth	12.8V	125Ah	M8	318	165	215	15.0kg	100A	4P	\$1,895
SNL24V125	03296253	12V125AH with Bluetooth	25.6V	125Ah	M8	518	271	222	32.2kg	100A	4P	\$3,050
SNL12V300BT	03296266	12V300AH with Bluetooth	12.8V	300Ah	M8	518	271	222	35.0kg	100A	4P	\$3,395
SNL24V150BT	03296268	24V150AH with Bluetooth	25.6V	150Ah	M8	518	271	222	35.0kg	100A	4P	\$3,395

8mate STREAM YOUR MUSIC COLLECTION TO YOUR LOUNGE ROOM'S SOUND SYSTEM

8 CORE 4K 7.1 ANDROID MEDIA PLAYER
WITH BONUS 3M ULTRA GOLD 4K HDMI CABLE

8MATE | 09006125
The 8mate has an 8 core central processing unit resulting in a highly responsive user experience. It also has the Mali T820 graphics processor for delivering stunning video quality at the highest resolutions. With SPDIF optical out and DTS processing the 8Mate is a great addition to your home theatre.

Stan.
NETFLIX



BONUS HIGH QUALITY BRAIDED HDMI CABLE!

RSP INC
\$349

RADIO PARTS INFO SESSIONS



REGISTER NOW
USING YOUR
SMART PHONE!

CAN'T SCAN QR CODES?
DOWNLOAD SCANLIFE
FROM YOUR APP STORE

NOVEMBER SESSIONS

Join us in November for more no-strings info sessions, more hands-on knowledge & more great deals!

DOSS CCTV GENERAL TRAINING

2nd Nov 2018



SANUS AV DISPLAY SOLUTIONS

16th Nov 2018



RELIABLE SOLUTIONS IN LIGHTING TECHNOLOGY FOR DAILY USE

LED FLOOD LIGHT 6500K COOL WHITE

Verbatim's LED Security Floodlight features a durable and modern aluminium IP65 / IK07 housing, protecting it from water, dust and external impacts. They feature a thin profile with an adjustable head to direct the light, and a metal bracket that allows them to be mounted on ceilings, walls or ground.



NEW

65457	25332376	30W	2400Lm	RSP INC \$34.95
65459	25332378	50W	3850Lm	\$44



BRILLIANT SOLUTION - ENERGY SAVING & DURABLE

SOLAR LIGHTS WITH SENSOR

IP65

These solar lights can automatically operate as a night light or a motion sensing light, depending on your preference. The internal batteries are automatically recharged through the day, so there's no wiring hassle.



NEW

SL3512	25122328	220Lm	RSP INC \$29.95
SL3514	25122331	400Lm	\$49.95

SL3512

SL3514



HARD TO ACCESS THE POWER WALL PLATE AT THE BACK OF THE TV?

POWER LEADS

If you need to power cycle an electrical device where it is hard to reach, then these power leads are the perfect solution! The inline switch allows you to quickly and easily turn your connected device.

CLPC52RS	27752400	2M CLOVER LEAF POWER LEAD
K9-RA2MRS	27752250	2M IEC C13 POWER LEAD

RSP INC

\$9.90

CLPC52RS



NEW

K9-RA2MRS

USB-C TO 3.5MM AUDIO LEAD

WC7930 | 30251980

Quick and easy headphone connection for your USB Type-C enabled device.

- Features a built-in Realtek DAC audio chipset for high quality sound performance

RSP INC
\$19.95

NEW



USB-C TO HDMI LEAD - 1M

WC7950 | 30251985

Connect your USB Type-C enabled device such as a smartphone, tablet or laptop directly to a HDMI TV or monitor.

RSP INC
\$49.95



NEW

HEXAPOD ROBOT TOBBIE

Tobbie is the new 6-legged robot that you can build. He can walk and spin in any direction, and will beep and flash his eyes while moving around.

KJ9031 | 53805439

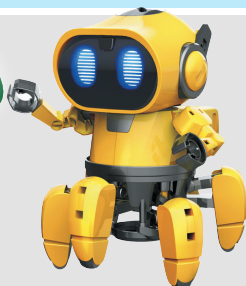
- Build-up from scratch
- Six legs for stable walking

VIEW THE ASSEMBLY VIDEO

Follow me & explore modes

RSP INC
\$49.95

NEW



PUPPY GO AI SMART DOG ROBOT

KR9234 | 53805445

- Voice command interaction
- Touch sensor interaction
- Can be used as Bluetooth Speaker
- Program set actions using App

RSP INC
\$169

NEW

CHECK IT OUT



4 EASY WAYS TO SHOP

RADIOPARTS.COM.AU

1 **ONLINE**
www.radioparts.com.au

2 **IN STORE**
Visit our showroom for product demonstrations

3 **OVER THE PHONE**
Call toll free: 1800 337 366

4 **VIA FAX**
Toll free fax: 1800 659 963

TRADE SALES TEAM

SALES MANAGER :	MICHAEL SWANN	0404 877 905
EAST VICTORIA :	JOE CIOTTA	0417 140 222
WEST VICTORIA :	DARREN ROWLANDS	0419 366 980
SA, NT, WA		
NORTH VICTORIA :	BEN MARSHALL	0418 531 965
QLD, TAS		
SYDNEY NSW, ACT :	MARK DE HAVILLAND	0424 184 534
NORTH NSW, QLD :	FRANK MANICASTRI	0437 179 495

RADIO PARTS DIAL-DIRECT

SALES: (03) 9321 8300 SHOWROOM: (03) 9321 8329

ACCOUNTS

A-J: (03) 9321 8364 K-Z: (03) 9321 8362

or call us toll free: **1800 337 366**



MAIN OFFICE

562 Spencer St., West Melbourne, VIC 3003
T: (03) 9321 8300 F: (03) 9321 8333
E: info@radioparts.com.au

Mon - Fri: 7:30am - 5:30pm Sat: 9am - 4pm

We accept:

